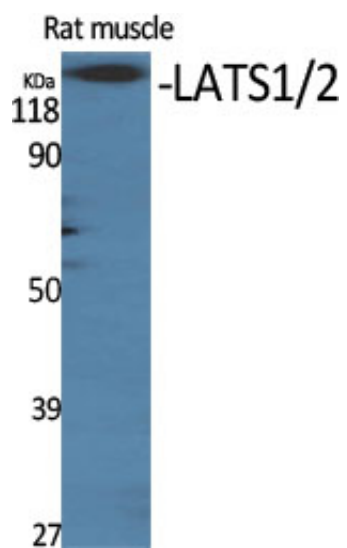




## LATS1/2 Polyclonal Antibody

Catalog_no :	AT2543
Applications :	WB,IHC-p,ELISA
Reactivity :	Human,Mouse
Category :	抗原抗体
Size :	100µg/50µg/20µg
Gene_name :	LATS1/LATS2
Protein_name :	Serine/threonine-protein kinase LATS1/2
Humangene_id :	<a href="#">9113/26524</a>
Humanswissprot_no :	<a href="#">O95835/Q9NRM7</a>
Mousegene_id :	<a href="#">16798/50523</a>
Immunogen :	The antiserum was produced against synthesized peptide derived from human LATS1/2. AA range:1041-1090
Specificity :	LATS1/2 Polyclonal Antibody detects endogenous levels of LATS1/2 protein.
Formulation :	Liquid in PBS containing 50% glycerol, 0.5% BSA and 0.02% sodium azide.
Source :	Rabbit
Dilution :	Immunohistochemistry: 1/100 - 1/300. ELISA: 1/40000. Not yet tested in other applications.
Purification :	The antibody was affinity-purified from rabbit antiserum by affinity-chromatography using epitope-specific immunogen.
Concentration :	1 mg/ml
Storage_stability :	-20°C/1 year
Msds :	<a href="#">MSDS_Antibody.pdf</a>
Other_name :	LATS1; WARTS; Serine/threonine-protein kinase LATS1; Large tumor suppressor homolog 1; WARTS protein kinase; h-warts; LATS2; KPM; Serine/threonine-protein kinase LATS2; Kinase phosphorylated during mitosis protein; Large tumor suppressor ho
Molecular Weight :	130-140KD

## Product Images



Western Blot analysis of various cells using LATS1/2  
Polyclonal Antibody diluted at 1 : 500