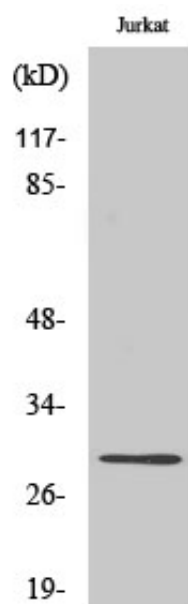




LDLRAD2 Polyclonal Antibody

Catalog_no :	AT2550
Applications :	WB,ELISA
Reactivity :	Human
Category :	抗原抗体
Size :	100µg/50µg/20µg
Gene_name :	LDLRAD2
Protein_name :	Low-density lipoprotein receptor class A domain-containing protein 2
Humangene_id :	401944
Humanswissprot_no :	Q5SZI1
Immunogen :	The antiserum was produced against synthesized peptide derived from human LDLRAD2. AA range:130-179
Specificity :	LDLRAD2 Polyclonal Antibody detects endogenous levels of LDLRAD2 protein.
Formulation :	Liquid in PBS containing 50% glycerol, 0.5% BSA and 0.02% sodium azide.
Source :	Rabbit
Dilution :	Western Blot: 1/500 - 1/2000. ELISA: 1/20000. Not yet tested in other applications.
Purification :	The antibody was affinity-purified from rabbit antiserum by affinity-chromatography using epitope-specific immunogen.
Concentration :	1 mg/ml
Storage_stability :	-20°C/1 year
Msds :	MSDS_Antibody.pdf
Other_name :	LDLRAD2; Low-density lipoprotein receptor class A domain-containing protein 2
Molecular Weight :	29KD

Product Images



Western Blot analysis of various cells using LDLRAD2 Polyclonal Antibody diluted at 1 : 500