



## LDOC1L Polyclonal Antibody

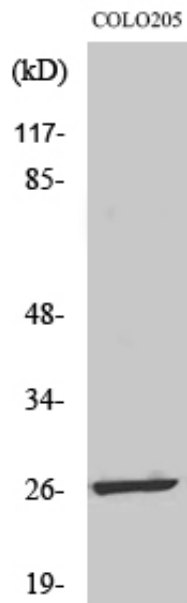
Catalog_no :	<u>AT2553</u>
Applications :	<u>WB,IHC-p,ELISA</u>
Reactivity :	<u>Human,Mouse</u>
Category :	<u>抗原抗体</u>
Size :	<u>100µg/50µg/20µg</u>
Gene_name :	<u>LDOC1L</u>
Protein_name :	<u>Protein LDOC1L</u>
Humangene_id :	<u><a href="#">84247</a></u>
Humanswissprot_no :	<u><a href="#">Q6ICC9</a></u>
Mousegene_id :	<u><a href="#">223732</a></u>
Mouseswissprot_no :	<u><a href="#">Q505G4</a></u>
Immunogen :	<u>The antiserum was produced against synthesized peptide derived from human LDOC1L. AA range:141-190</u>
Specificity :	<u>LDOC1L Polyclonal Antibody detects endogenous levels of LDOC1L protein.</u>
Formulation :	<u>Liquid in PBS containing 50% glycerol, 0.5% BSA and 0.02% sodium azide.</u>
Source :	<u>Rabbit</u>
Dilution :	<u>Western Blot: 1/500 - 1/2000. Immunohistochemistry: 1/100 - 1/300. ELISA: 1/20000. Not yet tested in other applications.</u>
Purification :	<u>The antibody was affinity-purified from rabbit antiserum by affinity-chromatography using epitope-specific immunogen.</u>
Concentration :	<u>1 mg/ml</u>
Storage_stability :	<u>-20°C/1 year</u>
Msds :	<u><a href="#">MSDS_Antibody.pdf</a></u>
Other_name :	<u>LDOC1L; MAR6; MART6; Protein LDOC1L; Leucine zipper protein down-regulated in cancer cells-like; Mammalian retrotransposon-derived protein 6</u>
Molecular	<u>24KD</u>



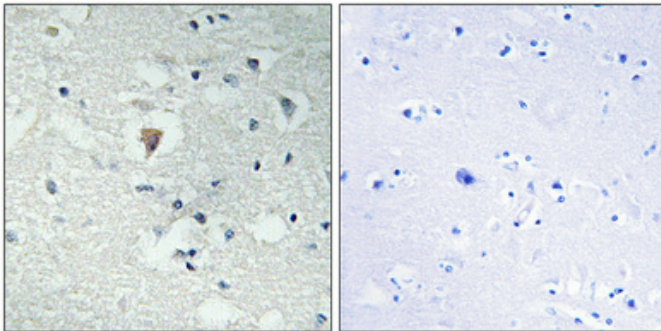
Weight :

---

## Product Images



Western Blot analysis of various cells using LDOC1L Polyclonal Antibody



Immunohistochemical analysis of paraffin-embedded Human brain. Antibody was diluted at 1:100(4°,overnight). High-pressure and temperature Tris-EDTA,pH8.0 was used for antigen retrieval. Negative contrl (right) obtaned from antibody was pre-absorbed by immunogen peptide.