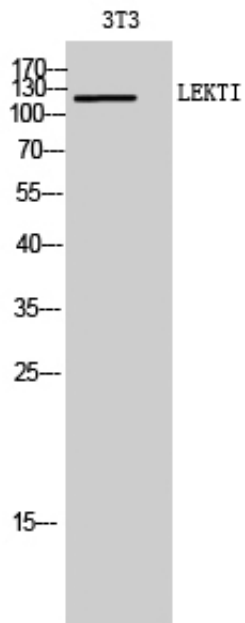


## LEKTI Polyclonal Antibody

Catalog_no :	AT2554
Applications :	WB,IHC-p,ELISA
Reactivity :	Human
Category :	抗原抗体
Size :	100µg/50µg/20µg
Gene_name :	SPINK5
Protein_name :	Serine protease inhibitor Kazal-type 5
Humangene_id :	<a href="#">11005</a>
Humanswissprot_no :	<a href="#">Q9NQ38</a>
Immunogen :	The antiserum was produced against synthesized peptide derived from human SPINK5. AA range:494-543
Specificity :	LEKTI Polyclonal Antibody detects endogenous levels of LEKTI protein.
Formulation :	Liquid in PBS containing 50% glycerol, 0.5% BSA and 0.02% sodium azide.
Source :	Rabbit
Dilution :	Western Blot: 1/500 - 1/2000. Immunohistochemistry: 1/100 - 1/300. ELISA: 1/20000. Not yet tested in other applications.
Purification :	The antibody was affinity-purified from rabbit antiserum by affinity-chromatography using epitope-specific immunogen.
Concentration :	1 mg/ml
Storage_stability :	-20°C/1 year
Msds :	MSDS_Antibody.pdf
Other_name :	SPINK5; Serine protease inhibitor Kazal-type 5; Lympho-epithelial Kazal-type-related inhibitor; LEKTI
Molecular Weight :	120KD

## Product Images



Western Blot analysis of 3T3 cells using LEKTI Polyclonal Antibody