



Lfc Polyclonal Antibody

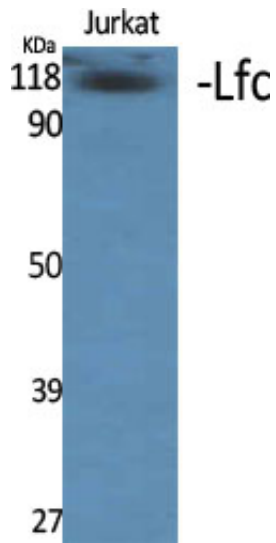
Catalog_no :	<u>AT2556</u>
Applications :	<u>WB,ELISA</u>
Reactivity :	<u>Human,Mouse,Rat</u>
Category :	<u>抗原抗体</u>
Size :	<u>100µg/50µg/20µg</u>
Gene_name :	<u>ARHGEF2</u>
Protein_name :	<u>Rho guanine nucleotide exchange factor 2</u>
Humangene_id	<u>9181</u>
:	
Humanswissprot	<u>Q92974</u>
_no :	
Mousegene_id :	<u>16800</u>
Mouseswissprot	<u>Q60875</u>
_no :	
Ratgene_id :	<u>310635</u>
Ratswissprot_no	<u>Q5FVC2</u>
:	
Immunogen :	<u>The antiserum was produced against synthesized peptide derived from human Rho/Rac Guanine Nucleotide Exchange Factor 2. AA range:851-900</u>
Specificity :	<u>Lfc Polyclonal Antibody detects endogenous levels of Lfc protein.</u>
Formulation :	<u>Liquid in PBS containing 50% glycerol, 0.5% BSA and 0.02% sodium azide.</u>
Source :	<u>Rabbit</u>
Dilution :	<u>Western Blot: 1/500 - 1/2000. ELISA: 1/5000. Not yet tested in other applications.</u>
Purification :	<u>The antibody was affinity-purified from rabbit antiserum by affinity-chromatography using epitope-specific immunogen.</u>
Concentration :	<u>1 mg/ml</u>
Storage_stability	<u>-20°C/1 year</u>
:	
Msds :	<u>MSDS_Antibody.pdf</u>



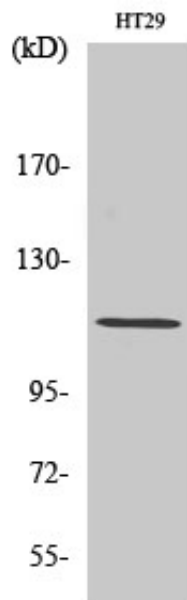
Other_name : ARHGEF2; KIAA0651; LFP40; Rho guanine nucleotide exchange factor 2; Guanine nucleotide exchange factor H1; GEF-H1; Microtubule-regulated Rho-GEF; Proliferating cell nucleolar antigen p40

Molecular Weight : 111KD

Product Images



Western Blot analysis of various cells using Lfc Polyclonal Antibody diluted at 1 : 1000



Western Blot analysis of HT29 cells using Lfc Polyclonal Antibody diluted at 1 : 1000