

## LHR Polyclonal Antibody

Catalog_no :	<u>AT2558</u>
Applications :	<u>WB,IF,ELISA</u>
Reactivity :	<u>Human,Mouse,Rat</u>
Category :	<u>抗原抗体</u>
Size :	<u>100µg/50µg/20µg</u>
Gene_name :	<u>LHCGR</u>
Protein_name :	<u>Lutropin-choriogonadotropic hormone receptor</u>
Humangene_id :	<u><a href="#">3973</a></u>
Humanswissprot_no :	<u><a href="#">P22888</a></u>
Mousegene_id :	<u><a href="#">16867</a></u>
Mouseswissprot_no :	<u><a href="#">P30730</a></u>
Ratgene_id :	<u><a href="#">25477</a></u>
Ratswissprot_no :	<u><a href="#">P16235</a></u>
Immunogen :	<u>The antiserum was produced against synthesized peptide derived from human LSHR. AA range:621-670</u>
Specificity :	<u>LHR Polyclonal Antibody detects endogenous levels of LHR protein.</u>
Formulation :	<u>Liquid in PBS containing 50% glycerol, 0.5% BSA and 0.02% sodium azide.</u>
Source :	<u>Rabbit</u>
Dilution :	<u>Western Blot: 1/500 - 1/2000. Immunofluorescence: 1/200 - 1/1000. ELISA: 1/10000. Not yet tested in other applications.</u>
Purification :	<u>The antibody was affinity-purified from rabbit antiserum by affinity-chromatography using epitope-specific immunogen.</u>
Concentration :	<u>1 mg/ml</u>
Storage_stability :	<u>-20°C/1 year</u>
Msds :	<u>MSDS_Antibody.pdf</u>



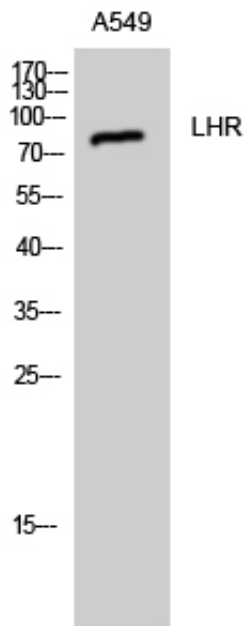
Other\_name : LHCGR; LCGR; LGR2; LHRHR; Lutropin-choriogonadotropic hormone receptor; LH/CG-R; Luteinizing hormone receptor; LHR; LSH-R

---

Molecular Weight : 80KD

---

## Product Images



Western Blot analysis of A549 cells using LHR Polyclonal Antibody