

LIMK-2 Polyclonal Antibody

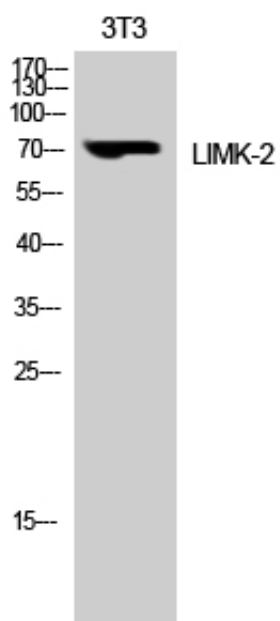
Catalog_no :	AT2566
Applications :	WB,ELISA
Reactivity :	Human,Mouse,Rat
Category :	抗原抗体
Size :	100µg/50µg/20µg
Gene_name :	LIMK2
Protein_name :	LIM domain kinase 2
Humangene_id :	3985
Humanswissprot_no :	P53671
Mousegene_id :	16886
Mouseswissprot_no :	O54785
Ratgene_id :	29524
Ratswissprot_no :	P53670
Immunogen :	The antiserum was produced against synthesized peptide derived from human LIMK2. AA range:249-298
Specificity :	LIMK-2 Polyclonal Antibody detects endogenous levels of LIMK-2 protein.
Formulation :	Liquid in PBS containing 50% glycerol, 0.5% BSA and 0.02% sodium azide.
Source :	Rabbit
Dilution :	Western Blot: 1/500 - 1/2000. ELISA: 1/5000. Not yet tested in other applications.
Purification :	The antibody was affinity-purified from rabbit antiserum by affinity-chromatography using epitope-specific immunogen.
Concentration :	1 mg/ml
Storage_stability :	-20°C/1 year
Msds :	MSDS_Antibody.pdf



Other_name : LIMK2; LIM domain kinase 2; LIMK-2

Molecular Weight : 72KD

Product Images



Western Blot analysis of 3T3 cells using LIMK-2 Polyclonal Antibody