



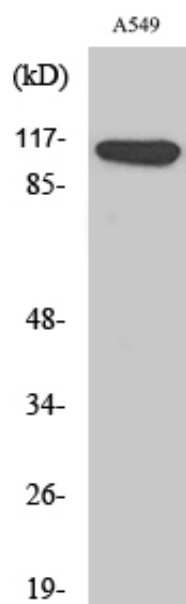
Liprin β 1 Polyclonal Antibody

Catalog_no :	AT2568
Applications :	WB,ELISA
Reactivity :	Human,Mouse
Category :	抗原抗体
Size :	100 μ g/50 μ g/20 μ g
Gene_name :	PPFIBP1
Protein_name :	Liprin-beta-1
Humangene_id :	8496
Humanswissprot_no :	Q86W92
Mousegene_id :	67533
Mouseswissprot_no :	Q8C8U0
Immunogen :	The antiserum was produced against synthesized peptide derived from human LIPB1. AA range:300-349
Specificity :	Liprin β 1 Polyclonal Antibody detects endogenous levels of Liprin β 1 protein.
Formulation :	Liquid in PBS containing 50% glycerol, 0.5% BSA and 0.02% sodium azide.
Source :	Rabbit
Dilution :	Western Blot: 1/500 - 1/2000. ELISA: 1/20000. Not yet tested in other applications.
Purification :	The antibody was affinity-purified from rabbit antiserum by affinity-chromatography using epitope-specific immunogen.
Concentration :	1 mg/ml
Storage_stability :	-20°C/1 year
Msds :	MSDS_Antibody.pdf
Other_name :	PPFIBP1; KIAA1230; Liprin-beta-1; Protein tyrosine phosphatase receptor type f polypeptide-interacting protein-binding protein 1; PTPRF-interacting protein-binding protein 1; hSGT2
Molecular	115KD



Weight :

Product Images



Western Blot analysis of various cells using Liprin β 1
Polyclonal Antibody diluted at 1 : 2000