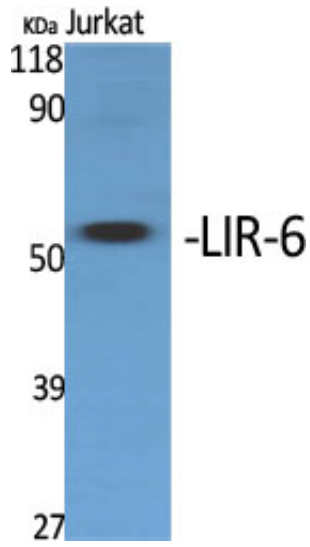




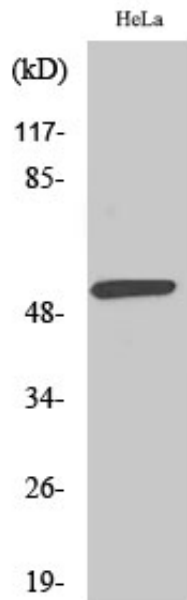
LIR-6 Polyclonal Antibody

Catalog_no :	AT2569
Applications :	WB,IF,ELISA
Reactivity :	Human
Category :	抗原抗体
Size :	100µg/50µg/20µg
Gene_name :	LILRA1
Protein_name :	Leukocyte immunoglobulin-like receptor subfamily A member 1
Humangene_id :	11024
Humanswissprot_no :	O75019
Immunogen :	The antiserum was produced against synthesized peptide derived from human LILRA1. AA range:53-102
Specificity :	LIR-6 Polyclonal Antibody detects endogenous levels of LIR-6 protein.
Formulation :	Liquid in PBS containing 50% glycerol, 0.5% BSA and 0.02% sodium azide.
Source :	Rabbit
Dilution :	Western Blot: 1/500 - 1/2000. Immunofluorescence: 1/200 - 1/1000. ELISA: 1/20000. Not yet tested in other applications.
Purification :	The antibody was affinity-purified from rabbit antiserum by affinity-chromatography using epitope-specific immunogen.
Concentration :	1 mg/ml
Storage_stability :	-20°C/1 year
Msds :	MSDS_Antibody.pdf
Other_name :	LILRA1; LIR6; Leukocyte immunoglobulin-like receptor subfamily A member 1; CD85 antigen-like family member I; Leukocyte immunoglobulin-like receptor 6; LIR-6; CD antigen CD85i
Molecular Weight :	53KD

Product Images



Western Blot analysis of various cells using LIR-6 Polyclonal Antibody



Western Blot analysis of MCF7 cells using LIR-6 Polyclonal Antibody