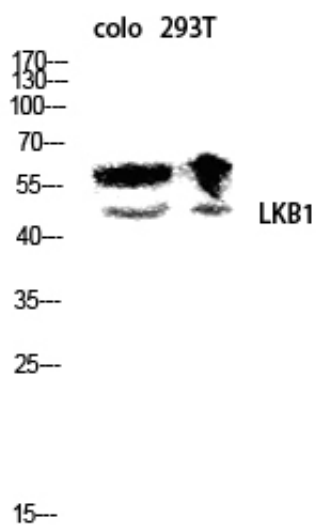




LKB1 Polyclonal Antibody

Catalog_no :	<u>AT2572</u>
Applications :	<u>WB,IHC-p,IF,ELISA</u>
Reactivity :	<u>Human,Mouse</u>
Category :	<u>抗原抗体</u>
Size :	<u>100µg/50µg/20µg</u>
Gene_name :	<u>STK11</u>
Protein_name :	<u>Serine/threonine-protein kinase STK11</u>
Humangene_id :	<u>6794</u>
Humanswissprot_no :	<u>Q15831</u>
Mousegene_id :	<u>20869</u>
Mouseswissprot_no :	<u>Q9WTK7</u>
Immunogen :	<u>The antiserum was produced against synthesized peptide derived from human LKB1. AA range:384-433</u>
Specificity :	<u>LKB1 Polyclonal Antibody detects endogenous levels of LKB1 protein.</u>
Formulation :	<u>Liquid in PBS containing 50% glycerol, 0.5% BSA and 0.02% sodium azide.</u>
Source :	<u>Rabbit</u>
Dilution :	<u>Immunohistochemistry: 1/100 - 1/300. Immunofluorescence: 1/200 - 1/1000. ELISA: 1/20000. Not yet tested in other applications.</u>
Purification :	<u>The antibody was affinity-purified from rabbit antiserum by affinity-chromatography using epitope-specific immunogen.</u>
Concentration :	<u>1 mg/ml</u>
Storage_stability :	<u>-20°C/1 year</u>
Msds :	<u>MSDS_Antibody.pdf</u>
Other_name :	<u>STK11; LKB1; PJS; Serine/threonine-protein kinase STK11; Liver kinase B1; LKB1; hLKB1; Renal carcinoma antigen NY-REN-19</u>

Product Images



Western blot analysis of colo 293T lysis using LKB1 antibody. Antibody was diluted at 1:500