

LMO4 Polyclonal Antibody

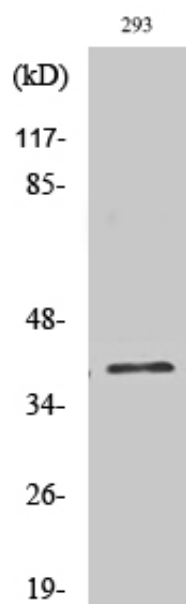
Catalog_no :	AT2575
Applications :	WB,IHC-p,IF,ELISA
Reactivity :	Human,Mouse,Rat
Category :	抗原抗体
Size :	100µg/50µg/20µg
Gene_name :	LMO4
Protein_name :	LIM domain transcription factor LMO4
Humangene_id :	8543
Humanswissprot_no :	P61968
Mousegene_id :	16911
Mouseswissprot_no :	P61969
Immunogen :	The antiserum was produced against synthesized peptide derived from human LMO4. AA range:116-165
Specificity :	LMO4 Polyclonal Antibody detects endogenous levels of LMO4 protein.
Formulation :	Liquid in PBS containing 50% glycerol, 0.5% BSA and 0.02% sodium azide.
Source :	Rabbit
Dilution :	Western Blot: 1/500 - 1/2000. Immunohistochemistry: 1/100 - 1/300. Immunofluorescence: 1/200 - 1/1000. ELISA: 1/20000. Not yet tested in other applications.
Purification :	The antibody was affinity-purified from rabbit antiserum by affinity-chromatography using epitope-specific immunogen.
Concentration :	1 mg/ml
Storage_stability :	-20°C/1 year
Msds :	MSDS_Antibody.pdf
Other_name :	LMO4; LIM domain transcription factor LMO4; Breast tumor autoantigen; LIM domain only protein 4; LMO-4



Molecular
Weight :

44KD

Product Images



Western Blot analysis of various cells using LMO4 Polyclonal Antibody cells nucleus extracted by Minute TM Cytoplasmic and Nuclear Fractionation kit (SC-003, Inventbiotech, MN, USA).