

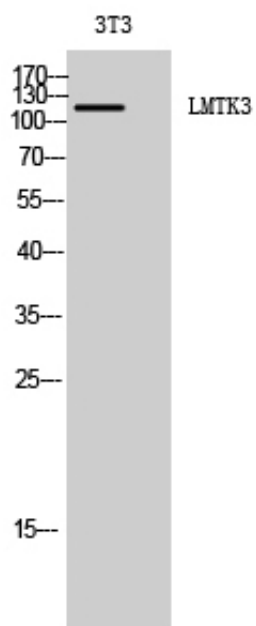
LMTK3 Polyclonal Antibody

Catalog_no :	AT2576
Applications :	WB,IHC-p,ELISA
Reactivity :	Human,Mouse
Category :	抗原抗体
Size :	100µg/50µg/20µg
Gene_name :	LMTK3
Protein_name :	Serine/threonine-protein kinase LMTK3
Humangene_id :	114783
Humanswissprot_no :	Q96Q04
Mousegene_id :	381983
Mouseswissprot_no :	Q5XJV6
Immunogen :	The antiserum was produced against synthesized peptide derived from human LMTK3. AA range:1251-1300
Specificity :	LMTK3 Polyclonal Antibody detects endogenous levels of LMTK3 protein.
Formulation :	Liquid in PBS containing 50% glycerol, 0.5% BSA and 0.02% sodium azide.
Source :	Rabbit
Dilution :	Western Blot: 1/500 - 1/2000. Immunohistochemistry: 1/100 - 1/300. ELISA: 1/20000. Not yet tested in other applications.
Purification :	The antibody was affinity-purified from rabbit antiserum by affinity-chromatography using epitope-specific immunogen.
Concentration :	1 mg/ml
Storage_stability :	-20°C/1 year
Msds :	MSDS_Antibody.pdf
Other_name :	LMTK3; KIAA1883; TYKLM3; Serine/threonine-protein kinase LMTK3; Lemur tyrosine kinase 3
Molecular	40KD



Weight :

Product Images



Western Blot analysis of 3T3 cells using LMTK3
Polyclonal Antibody diluted at 1 : 2000