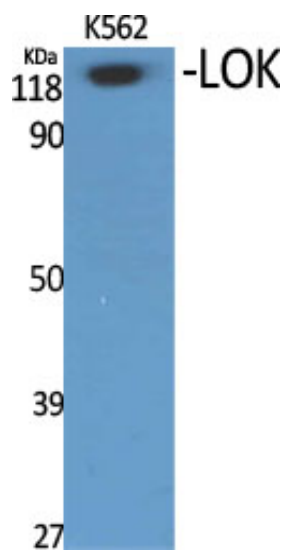




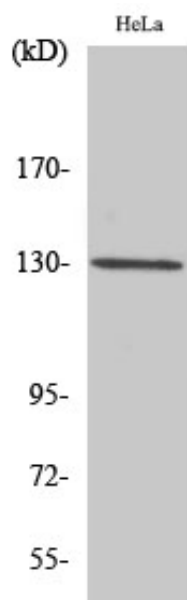
LOK Polyclonal Antibody

Catalog_no :	AT2578
Applications :	WB,ELISA
Reactivity :	Human
Category :	抗原抗体
Size :	100µg/50µg/20µg
Gene_name :	STK10
Protein_name :	Serine/threonine-protein kinase 10
Humangene_id :	6793
Humanswissprot_no :	O94804
Immunogen :	The antiserum was produced against synthesized peptide derived from human STK10. AA range:491-540
Specificity :	LOK Polyclonal Antibody detects endogenous levels of LOK protein.
Formulation :	Liquid in PBS containing 50% glycerol, 0.5% BSA and 0.02% sodium azide.
Source :	Rabbit
Dilution :	Western Blot: 1/500 - 1/2000. ELISA: 1/20000. Not yet tested in other applications.
Purification :	The antibody was affinity-purified from rabbit antiserum by affinity-chromatography using epitope-specific immunogen.
Concentration :	1 mg/ml
Storage_stability :	-20°C/1 year
Msds :	MSDS_Antibody.pdf
Other_name :	STK10; LOK; Serine/threonine-protein kinase 10; Lymphocyte-oriented kinase
Molecular Weight :	120KD

Product Images



Western Blot analysis of various cells using LOK Polyclonal Antibody



Western Blot analysis of HuvEc cells using LOK Polyclonal Antibody