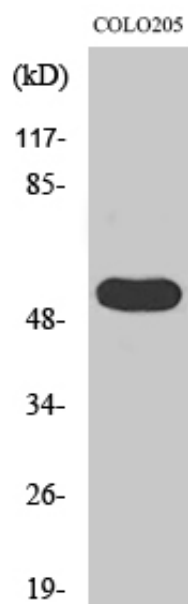


## LPD lipase Polyclonal Antibody

Catalog_no :	AT2586
Applications :	WB,IHC-p,ELISA
Reactivity :	Human
Category :	抗原抗体
Size :	100µg/50µg/20µg
Gene_name :	LIPI
Protein_name :	Lipase member I
Humangene_id :	<a href="#">149998</a>
Humanswissprot_no :	<a href="#">Q6XZB0</a>
Immunogen :	The antiserum was produced against synthesized peptide derived from human LIPI. AA range:289-338
Specificity :	LPD lipase Polyclonal Antibody detects endogenous levels of LPD lipase protein.
Formulation :	Liquid in PBS containing 50% glycerol, 0.5% BSA and 0.02% sodium azide.
Source :	Rabbit
Dilution :	Western Blot: 1/500 - 1/2000. Immunohistochemistry: 1/100 - 1/300. ELISA: 1/10000. Not yet tested in other applications.
Purification :	The antibody was affinity-purified from rabbit antiserum by affinity-chromatography using epitope-specific immunogen.
Concentration :	1 mg/ml
Storage_stability :	-20°C/1 year
Msds :	MSDS_Antibody.pdf
Other_name :	LIPI; LPDL; PRED5; Lipase member I; LIPI; Cancer/testis antigen 17; CT17; LPD lipase; Membrane-associated phosphatidic acid-selective phospholipase A1-beta; mPA-PLA1 beta
Molecular Weight :	53KD

## Product Images



Western Blot analysis of various cells using LPD lipase Polyclonal Antibody