



## LRAT Polyclonal Antibody

|                   |   |
|-------------------|---|
| Catalog_no :      | <u>AT2587</u>   |
| Applications :    | <u>WB,IHC-p,IF,ELISA</u>  |
| Reactivity :      | <u>Human,Mouse,Rat</u>  |
| Category :        | <u>抗原抗体</u>   |
| Size :            | <u>100µg/50µg/20µg</u>  |
| Gene_name :       | <u>LRAT</u>   |
| Protein_name :    | <u>Lecithin retinol acyltransferase</u>   |
| Humangene_id      | <u><a href="#">9227</a></u>   |
| :                 | <u></u>   |
| Humanswissprot    | <u><a href="#">O95237</a></u>   |
| _no :             | <u></u>   |
| Mousegene_id :    | <u><a href="#">79235</a></u>  |
| Mouseswissprot    | <u><a href="#">Q9JI60</a></u>   |
| _no :             | <u></u>   |
| Ratgene_id :      | <u><a href="#">64047</a></u>  |
| Ratswissprot_no   | <u><a href="#">Q9JI61</a></u>   |
| :                 | <u></u>   |
| Immunogen :       | <u>The antiserum was produced against synthesized peptide derived from human LRAT. AA range:111-160</u>   |
| Specificity :     | <u>LRAT Polyclonal Antibody detects endogenous levels of LRAT protein.</u>  |
| Formulation :     | <u>Liquid in PBS containing 50% glycerol, 0.5% BSA and 0.02% sodium azide.</u>  |
| Source :          | <u>Rabbit</u>   |
| Dilution :        | <u>Western Blot: 1/500 - 1/2000. Immunohistochemistry: 1/100 - 1/300. Immunofluorescence: 1/200 - 1/1000. ELISA: 1/10000. Not yet tested in other applications.</u> |
| Purification :    | <u>The antibody was affinity-purified from rabbit antiserum by affinity-chromatography using epitope-specific immunogen.</u>  |
| Concentration :   | <u>1 mg/ml</u>  |
| Storage_stability | <u>-20°C/1 year</u>   |
| :                 | <u></u>   |

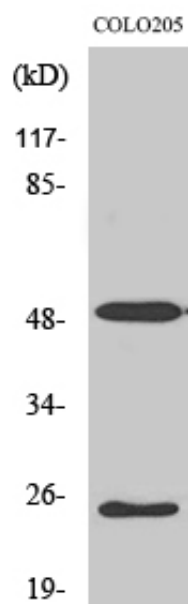


Msd : MSDS\_Antibody.pdf

Other\_name : LRAT; Lecithin retinol acyltransferase; Phosphatidylcholine--retinol O-acyltransferase

Molecular Weight : 27KD

## Product Images



Western Blot analysis of various cells using LRAT Polyclonal Antibody diluted at 1 : 500