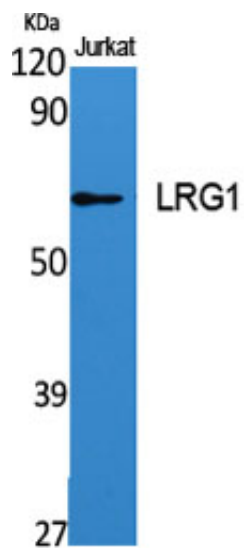




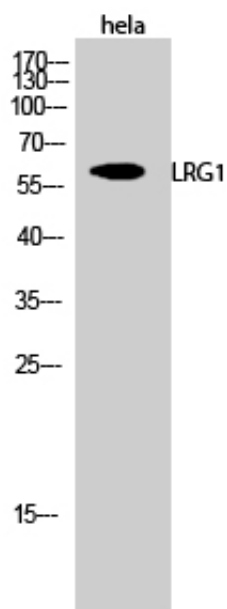
LRG1 Polyclonal Antibody

Catalog_no :	AT2588
Applications :	WB,ELISA
Reactivity :	Human
Category :	抗原抗体
Size :	100µg/50µg/20µg
Gene_name :	LRG1
Protein_name :	Leucine-rich alpha-2-glycoprotein
Humangene_id :	116844
Humanswissprot_no :	P02750
Immunogen :	Synthesized peptide derived from the C-terminal region of human LRG1.
Specificity :	LRG1 Polyclonal Antibody detects endogenous levels of LRG1 protein.
Formulation :	Liquid in PBS containing 50% glycerol, 0.5% BSA and 0.02% sodium azide.
Source :	Rabbit
Dilution :	Western Blot: 1/500 - 1/2000. ELISA: 1/5000. Not yet tested in other applications.
Purification :	The antibody was affinity-purified from rabbit antiserum by affinity-chromatography using epitope-specific immunogen.
Concentration :	1 mg/ml
Storage_stability :	-20°C/1 year
Msds :	MSDS_Antibody.pdf
Other_name :	LRG1; LRG; Leucine-rich alpha-2-glycoprotein; LRG
Molecular Weight :	58KD

Product Images



Western Blot analysis of various cells using LRG1 Polyclonal Antibody



Western Blot analysis of HeLa cells using LRG1 Polyclonal Antibody