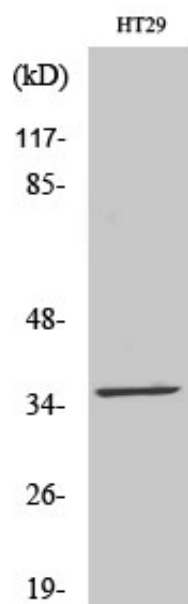




LTB4DH Polyclonal Antibody

Catalog_no :	AT2597
Applications :	WB,ELISA
Reactivity :	Human
Category :	抗原抗体
Size :	100µg/50µg/20µg
Gene_name :	PTGR1
Protein_name :	Prostaglandin reductase 1
Humangene_id :	22949
Humanswissprot_no :	Q14914
Immunogen :	The antiserum was produced against synthesized peptide derived from human PTGR1. AA range:75-124
Specificity :	LTB4DH Polyclonal Antibody detects endogenous levels of LTB4DH protein.
Formulation :	Liquid in PBS containing 50% glycerol, 0.5% BSA and 0.02% sodium azide.
Source :	Rabbit
Dilution :	Western Blot: 1/500 - 1/2000. ELISA: 1/5000. Not yet tested in other applications.
Purification :	The antibody was affinity-purified from rabbit antiserum by affinity-chromatography using epitope-specific immunogen.
Concentration :	1 mg/ml
Storage_stability :	-20°C/1 year
Msds :	MSDS_Antibody.pdf
Other_name :	PTGR1; LTB4DH; Prostaglandin reductase 1; PRG-1; 15-oxoprostaglandin 13-reductase; NADP-dependent leukotriene B4 12-hydroxydehydrogenase
Molecular Weight :	36KD

Product Images



Western Blot analysis of various cells using LTB4DH Polyclonal Antibody