

L-type Ca⁺⁺ CP γ 7 Polyclonal Antibody

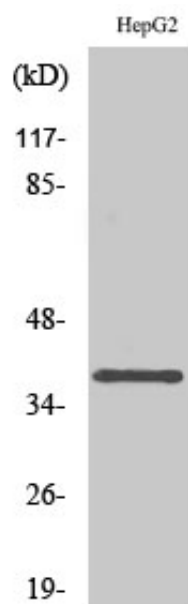
Catalog_no :	AT2600
Applications :	WB,ELISA
Reactivity :	Human,Mouse,Rat
Category :	抗原抗体
Size :	100 μ g/50 μ g/20 μ g
Gene_name :	CACNG7
Protein_name :	Voltage-dependent calcium channel gamma-7 subunit
Humangene_id :	59284
Humanswissprot_no :	P62955
Mousegene_id :	81904
Mouseswissprot_no :	P62956
Ratgene_id :	140728
Ratswissprot_no :	P62957
Immunogen :	The antiserum was produced against synthesized peptide derived from human CACNG7. AA range:198-247
Specificity :	L-type Ca ⁺⁺ CP γ 7 Polyclonal Antibody detects endogenous levels of L-type Ca ⁺⁺ CP γ 7 protein.
Formulation :	Liquid in PBS containing 50% glycerol, 0.5% BSA and 0.02% sodium azide.
Source :	Rabbit
Dilution :	Western Blot: 1/500 - 1/2000. ELISA: 1/20000. Not yet tested in other applications.
Purification :	The antibody was affinity-purified from rabbit antiserum by affinity-chromatography using epitope-specific immunogen.
Concentration :	1 mg/ml
Storage_stability :	-20°C/1 year
Msds :	MSDS_Antibody.pdf



Other_name : CACNG7; Voltage-dependent calcium channel gamma-7 subunit; Neuronal voltage-gated calcium channel gamma-7 subunit; Transmembrane AMPAR regulatory protein gamma-7; TARP gamma-7

Molecular Weight : 40KD

Product Images



Western Blot analysis of various cells using L-type Ca⁺⁺ CP γ 7 Polyclonal Antibody diluted at 1 : 1000