

LT- $\beta$  Polyclonal Antibody

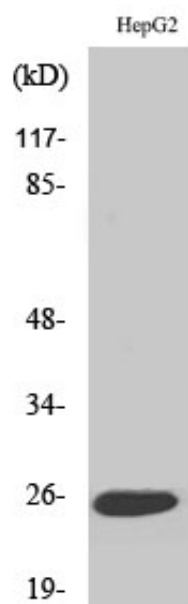
Catalog_no :	AT2601
Applications :	WB,IF,ELISA
Reactivity :	Human,Mouse
Category :	抗原抗体
Size :	100 $\mu$ g/50 $\mu$ g/20 $\mu$ g
Gene_name :	LTB
Protein_name :	Lymphotoxin-beta
Humangene_id :	<a href="#">4050</a>
Humanswissprot_no :	<a href="#">Q06643</a>
Mousegene_id :	<a href="#">16994</a>
Mouseswissprot_no :	<a href="#">P41155</a>
Immunogen :	The antiserum was produced against synthesized peptide derived from human TNFC. AA range:181-230
Specificity :	LT- $\beta$ Polyclonal Antibody detects endogenous levels of LT- $\beta$ protein.
Formulation :	Liquid in PBS containing 50% glycerol, 0.5% BSA and 0.02% sodium azide.
Source :	Rabbit
Dilution :	Western Blot: 1/500 - 1/2000. Immunofluorescence: 1/200 - 1/1000. ELISA: 1/10000. Not yet tested in other applications.
Purification :	The antibody was affinity-purified from rabbit antiserum by affinity-chromatography using epitope-specific immunogen.
Concentration :	1 mg/ml
Storage_stability :	-20°C/1 year
Msds :	<a href="#">MSDS_Antibody.pdf</a>
Other_name :	LTB; TNFC; TNFSF3; Lymphotoxin-beta; LT-beta; Tumor necrosis factor C; TNF-C; Tumor necrosis factor ligand superfamily member 3
Molecular	22KD



Weight :

---

## Product Images



Western Blot analysis of various cells using LT- $\beta$  Polyclonal Antibody