



## LTβR Polyclonal Antibody

Catalog_no :	<u>AT2602</u>
Applications :	<u>WB,IF,ELISA</u>
Reactivity :	<u>Human,Mouse</u>
Category :	<u>抗原抗体</u>
Size :	<u>100μg/50μg/20μg</u>
Gene_name :	<u>LTBR</u>
Protein_name :	<u>Tumor necrosis factor receptor superfamily member 3</u>
Humangene_id :	<u><a href="#">4055</a></u>
Humanswissprot_no :	<u><a href="#">P36941</a></u>
Mousegene_id :	<u><a href="#">17000</a></u>
Mouseswissprot_no :	<u><a href="#">P50284</a></u>
Immunogen :	<u>The antiserum was produced against synthesized peptide derived from human LTBR. AA range:11-60</u>
Specificity :	<u>LTβR Polyclonal Antibody detects endogenous levels of LTβR protein.</u>
Formulation :	<u>Liquid in PBS containing 50% glycerol, 0.5% BSA and 0.02% sodium azide.</u>
Source :	<u>Rabbit</u>
Dilution :	<u>Western Blot: 1/500 - 1/2000. Immunofluorescence: 1/200 - 1/1000. ELISA: 1/40000. Not yet tested in other applications.</u>
Purification :	<u>The antibody was affinity-purified from rabbit antiserum by affinity-chromatography using epitope-specific immunogen.</u>
Concentration :	<u>1 mg/ml</u>
Storage_stability :	<u>-20°C/1 year</u>
Msds :	<u><a href="#">MSDS_Antibody.pdf</a></u>
Other_name :	<u>LTBR; D12S370; TNFCR; TNFR3; TNFRSF3; Tumor necrosis factor receptor superfamily member 3; Lymphotoxin-beta receptor; Tumor necrosis factor C receptor; Tumor necrosis factor receptor 2-related protein; Tumor necrosis factor receptor type II</u>

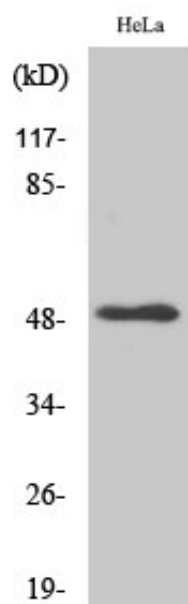


Molecular  
Weight :

50KD

---

## Product Images



Western Blot analysis of various cells using LT $\beta$ R Polyclonal Antibody