



## LUC7L2 Polyclonal Antibody

Catalog_no :	<u>AT2603</u>
Applications :	<u>WB,IHC-p,ELISA</u>
Reactivity :	<u>Human,Mouse,Rat</u>
Category :	<u>抗原抗体</u>
Size :	<u>100µg/50µg/20µg</u>
Gene_name :	<u>LUC7L2</u>
Protein_name :	<u>Putative RNA-binding protein Luc7-like 2</u>
Humangene_id	<u><a href="#">51631</a></u>
:	
Humanswissprot	<u><a href="#">Q9Y383</a></u>
_no :	
Mousegene_id :	<u><a href="#">192196</a></u>
Mouseswissprot	<u><a href="#">Q7TNC4</a></u>
_no :	
Immunogen :	<u>The antiserum was produced against synthesized peptide derived from human LUC7L2. AA range:129-178</u>
Specificity :	<u>LUC7L2 Polyclonal Antibody detects endogenous levels of LUC7L2 protein.</u>
Formulation :	<u>Liquid in PBS containing 50% glycerol, 0.5% BSA and 0.02% sodium azide.</u>
Source :	<u>Rabbit</u>
Dilution :	<u>Western Blot: 1/500 - 1/2000. Immunohistochemistry: 1/100 - 1/300. ELISA: 1/40000. Not yet tested in other applications.</u>
Purification :	<u>The antibody was affinity-purified from rabbit antiserum by affinity-chromatography using epitope-specific immunogen.</u>
Concentration :	<u>1 mg/ml</u>
Storage_stability	<u>-20°C/1 year</u>
:	
Msds :	<u>MSDS_Antibody.pdf</u>
Other_name :	<u>LUC7L2; CGI-59; CGI-74; Putative RNA-binding protein Luc7-like 2</u>
Molecular Weight :	<u>47KD</u>

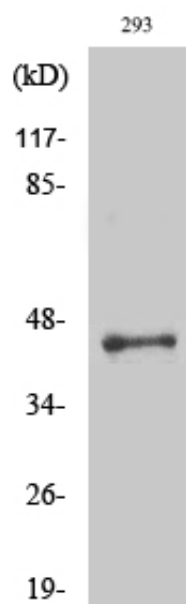


**专注二抗产品**

Biodragon旗下品牌

---

## Product Images



Western Blot analysis of various cells using LUC7L2 Polyclonal Antibody