



## LUCA15 Polyclonal Antibody

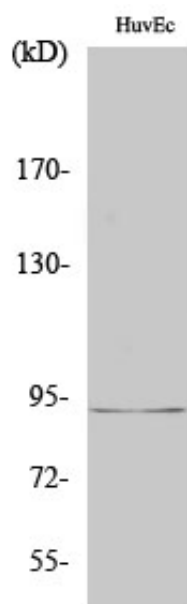
Catalog_no :	AT2604
Applications :	WB,IHC-p,ELISA
Reactivity :	Human,Mouse
Category :	抗原抗体
Size :	100µg/50µg/20µg
Gene_name :	RBM5
Protein_name :	RNA-binding protein 5
Humangene_id :	<a href="#">10181</a>
Humanswissprot_no :	<a href="#">P52756</a>
Mousegene_id :	<a href="#">83486</a>
Mouseswissprot_no :	<a href="#">Q91YE7</a>
Immunogen :	The antiserum was produced against synthesized peptide derived from human RBM5. AA range:226-275
Specificity :	LUCA15 Polyclonal Antibody detects endogenous levels of LUCA15 protein.
Formulation :	Liquid in PBS containing 50% glycerol, 0.5% BSA and 0.02% sodium azide.
Source :	Rabbit
Dilution :	Western Blot: 1/500 - 1/2000. Immunohistochemistry: 1/100 - 1/300. ELISA: 1/10000. Not yet tested in other applications.
Purification :	The antibody was affinity-purified from rabbit antiserum by affinity-chromatography using epitope-specific immunogen.
Concentration :	1 mg/ml
Storage_stability :	-20°C/1 year
Msds :	<a href="#">MSDS_Antibody.pdf</a>
Other_name :	RBM5; H37; LUCA15; RNA-binding protein 5; Protein G15; Putative tumor suppressor LUCA15; RNA-binding motif protein 5; Renal carcinoma antigen NY-REN-9
Molecular	92KD



Weight :

---

## Product Images



Western Blot analysis of various cells using LUCA15 Polyclonal Antibody cells nucleus extracted by Minute TM Cytoplasmic and Nuclear Fractionation kit (SC-003, Inventbiotech, MN, USA).