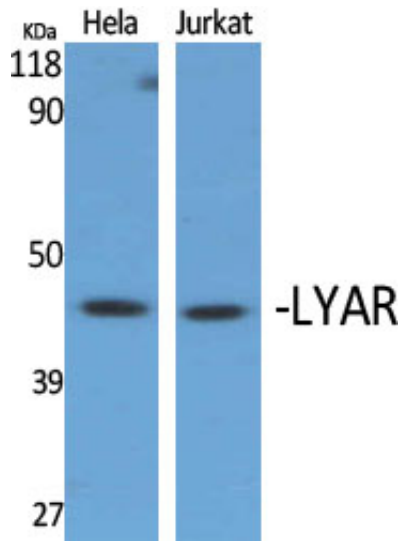




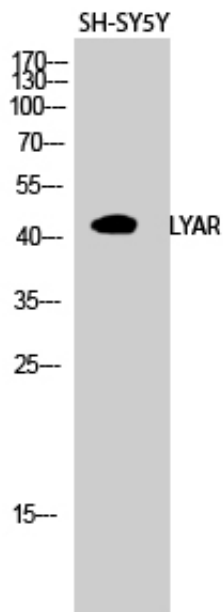
LYAR Polyclonal Antibody

Catalog_no :	AT2606
Applications :	WB,IHC-p,ELISA
Reactivity :	Human
Category :	抗原抗体
Size :	100µg/50µg/20µg
Gene_name :	LYAR
Protein_name :	Cell growth-regulating nucleolar protein
Humangene_id :	55646
Humanswissprot_no :	Q9NX58
Immunogen :	The antiserum was produced against synthesized peptide derived from human LYAR. AA range:241-290
Specificity :	LYAR Polyclonal Antibody detects endogenous levels of LYAR protein.
Formulation :	Liquid in PBS containing 50% glycerol, 0.5% BSA and 0.02% sodium azide.
Source :	Rabbit
Dilution :	Western Blot: 1/500 - 1/2000. Immunohistochemistry: 1/100 - 1/300. ELISA: 1/10000. Not yet tested in other applications.
Purification :	The antibody was affinity-purified from rabbit antiserum by affinity-chromatography using epitope-specific immunogen.
Concentration :	1 mg/ml
Storage_stability :	-20°C/1 year
Msds :	MSDS_Antibody.pdf
Other_name :	LYAR; PNAS-5; Cell growth-regulating nucleolar protein
Molecular Weight :	44KD

Product Images



Western Blot analysis of various cells using LYAR Polyclonal Antibody diluted at 1 : 2000 cells nucleus extracted by Minute TM Cytoplasmic and Nuclear Fractionation kit (SC-003, Inventbiotech, MN, USA).



Western Blot analysis of SH-SY5Y cells using LYAR Polyclonal Antibody diluted at 1 : 2000 cells nucleus extracted by Minute TM Cytoplasmic and Nuclear Fractionation kit (SC-003, Inventbiotech, MN, USA).