

## Lyn Polyclonal Antibody

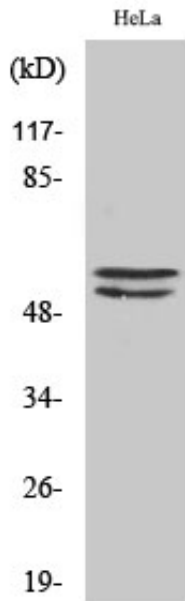
Catalog_no :	AT2608
Applications :	WB,IHC-p,ELISA
Reactivity :	Human,Mouse,Rat
Category :	抗原抗体
Size :	100µg/50µg/20µg
Gene_name :	LYN
Protein_name :	Tyrosine-protein kinase Lyn
Humangene_id :	<a href="#">4067</a>
Humanswissprot_no :	<a href="#">P07948</a>
Mousegene_id :	<a href="#">17096</a>
Mouseswissprot_no :	<a href="#">P25911</a>
Ratgene_id :	<a href="#">81515</a>
Ratswissprot_no :	<a href="#">Q07014</a>
Immunogen :	The antiserum was produced against synthesized peptide derived from human Lyn. AA range:463-512
Specificity :	Lyn Polyclonal Antibody detects endogenous levels of Lyn protein.
Formulation :	Liquid in PBS containing 50% glycerol, 0.5% BSA and 0.02% sodium azide.
Source :	Rabbit
Dilution :	Western Blot: 1/500 - 1/2000. Immunohistochemistry: 1/100 - 1/300. ELISA: 1/5000. Not yet tested in other applications.
Purification :	The antibody was affinity-purified from rabbit antiserum by affinity-chromatography using epitope-specific immunogen.
Concentration :	1 mg/ml
Storage_stability :	-20°C/1 year
Msds :	MSDS_Antibody.pdf



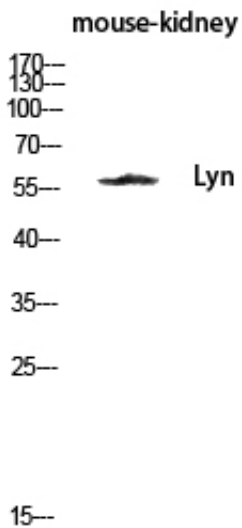
Other\_name : LYN; JTK8; Tyrosine-protein kinase Lyn; Lck/Yes-related novel protein tyrosine kinase; V-yes-1 Yamaguchi sarcoma viral related oncogene homolog; p53Lyn; p56Lyn

Molecular Weight : 53KD,56KD

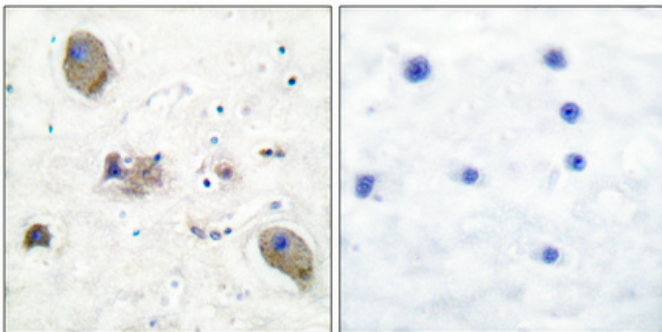
## Product Images



Western Blot analysis of various cells using Lyn Polyclonal Antibody diluted at 1 : 500



Western blot analysis of mouse-kidney lysis using Lyn antibody. Antibody was diluted at 1:500



Immunohistochemical analysis of paraffin-embedded Human breast cancer. Antibody was diluted at 1:100(4°,overnight). High-pressure and temperature Tris-EDTA,pH8.0 was used for antigen retrieval. Negative contrl (right) obtaned from antibody was pre-absorbed by immunogen peptide.