

LYPLA1 Polyclonal Antibody

Catalog_no :	AT2609
Applications :	WB,IHC-p,IF,ELISA
Reactivity :	Human,Mouse,Rat
Category :	抗原抗体
Size :	100µg/50µg/20µg
Gene_name :	LYPLA1
Protein_name :	Acyl-protein thioesterase 1
Humangene_id	10434
:	
Humanswissprot	O75608
_no :	
Mousegene_id :	18777
Mouseswissprot	P97823
_no :	
Ratgene_id :	25514
Ratswissprot_no	P70470
:	
Immunogen :	The antiserum was produced against synthesized peptide derived from human LYPLA1. AA range:51-100
Specificity :	LYPLA1 Polyclonal Antibody detects endogenous levels of LYPLA1 protein.
Formulation :	Liquid in PBS containing 50% glycerol, 0.5% BSA and 0.02% sodium azide.
Source :	Rabbit
Dilution :	Western Blot: 1/500 - 1/2000. Immunohistochemistry: 1/100 - 1/300. Immunofluorescence: 1/200 - 1/1000. ELISA: 1/40000. Not yet tested in other applications.
Purification :	The antibody was affinity-purified from rabbit antiserum by affinity-chromatography using epitope-specific immunogen.
Concentration :	1 mg/ml
Storage_stability	-20°C/1 year
:	

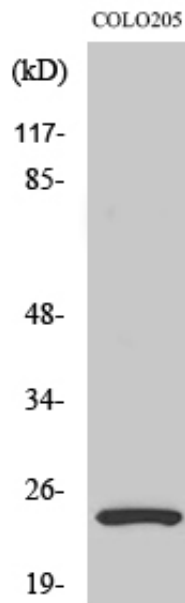


MsdS : MSDS_Antibody.pdf

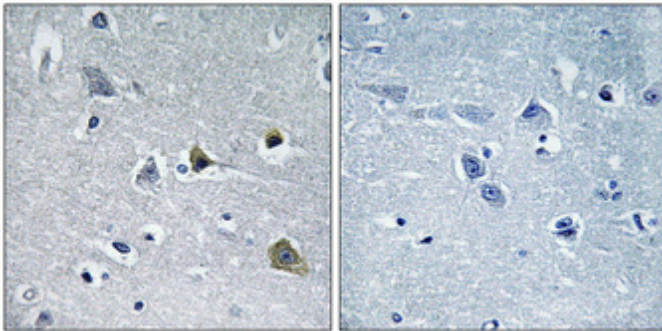
Other_name : LYPLA1; APT1; LPL1; Acyl-protein thioesterase 1; APT-1; hAPT1; Lysophospholipase 1; Lysophospholipase I; LPL-I; LysoPLA I

Molecular Weight : 25KD

Product Images



Western Blot analysis of various cells using LYPLA1 Polyclonal Antibody diluted at 1 : 2000



Immunohistochemical analysis of paraffin-embedded Human brain. Antibody was diluted at 1:100(4°,overnight). High-pressure and temperature Tris-EDTA,pH8.0 was used for antigen retrieval. Negative contrl (right) obtaned from antibody was pre-absorbed by immunogen peptide.