



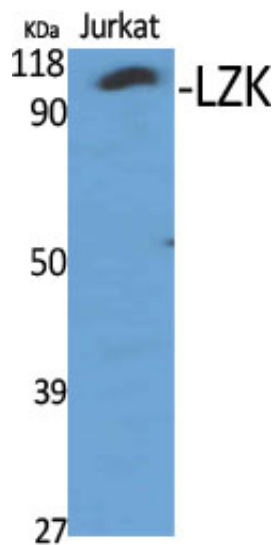
LZK Polyclonal Antibody

| | |
|---------------------|---|
| Catalog_no : | AT2610 |
| Applications : | WB,IHC-p,ELISA |
| Reactivity : | Human,Mouse,Rat |
| Category : | 抗原抗体 |
| Size : | 100µg/50µg/20µg |
| Gene_name : | MAP3K13 |
| Protein_name : | Mitogen-activated protein kinase kinase kinase 13 |
| Humangene_id : | 9175 |
| Humanswissprot_no : | O43283 |
| Mousegene_id : | 71751 |
| Mouseswissprot_no : | Q1HKZ5 |
| Immunogen : | The antiserum was produced against synthesized peptide derived from human M3K13. AA range:151-200 |
| Specificity : | LZK Polyclonal Antibody detects endogenous levels of LZK protein. |
| Formulation : | Liquid in PBS containing 50% glycerol, 0.5% BSA and 0.02% sodium azide. |
| Source : | Rabbit |
| Dilution : | Western Blot: 1/500 - 1/2000. Immunohistochemistry: 1/100 - 1/300. ELISA: 1/20000. Not yet tested in other applications. |
| Purification : | The antibody was affinity-purified from rabbit antiserum by affinity-chromatography using epitope-specific immunogen. |
| Concentration : | 1 mg/ml |
| Storage_stability : | -20°C/1 year |
| Msds : | MSDS_Antibody.pdf |
| Other_name : | MAP3K13; LZK; Mitogen-activated protein kinase kinase kinase 13; Leucine zipper-bearing kinase; Mixed lineage kinase; MLK |
| Molecular | 108KD |

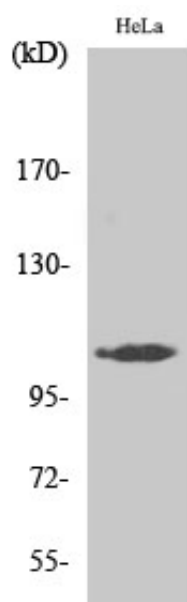


Weight :

Product Images



Western Blot analysis of various cells using LZK Polyclonal Antibody



Western Blot analysis of HepG2 cells using LZK Polyclonal Antibody