

mAChR M2 Polyclonal Antibody

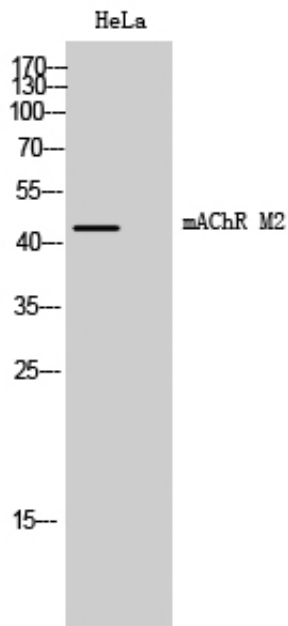
Catalog_no :	AT2612
Applications :	WB,IF,ELISA
Reactivity :	Human,Mouse,Rat
Category :	抗原抗体
Size :	100µg/50µg/20µg
Gene_name :	CHRM2
Protein_name :	Muscarinic acetylcholine receptor M2
Humangene_id :	1129
Humanswissprot_no :	P08172
Mousegene_id :	243764
Mouseswissprot_no :	Q9ERZ4
Ratgene_id :	81645
Ratswissprot_no :	P10980
Immunogen :	The antiserum was produced against synthesized peptide derived from human CHRM2. AA range:185-234
Specificity :	mAChR M2 Polyclonal Antibody detects endogenous levels of mAChR M2 protein.
Formulation :	Liquid in PBS containing 50% glycerol, 0.5% BSA and 0.02% sodium azide.
Source :	Rabbit
Dilution :	Western Blot: 1/500 - 1/2000. Immunofluorescence: 1/200 - 1/1000. ELISA: 1/20000. Not yet tested in other applications.
Purification :	The antibody was affinity-purified from rabbit antiserum by affinity-chromatography using epitope-specific immunogen.
Concentration :	1 mg/ml
Storage_stability :	-20°C/1 year
Msds :	MSDS_Antibody.pdf



Other_name : CHRM2; Muscarinic acetylcholine receptor M2

Molecular Weight : 85KD

Product Images



Western Blot analysis of HeLa cells using mAChR M2 Polyclonal Antibody