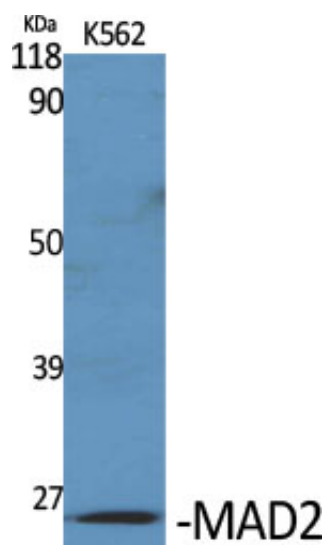


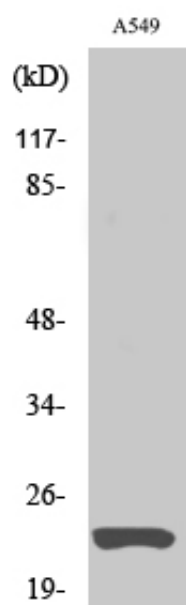
## MAD2 Polyclonal Antibody

Catalog_no :	AT2618
Applications :	WB,ELISA
Reactivity :	Human
Category :	抗原抗体
Size :	100µg/50µg/20µg
Gene_name :	MAD2L1
Protein_name :	Mitotic spindle assembly checkpoint protein MAD2A
Humangene_id	<a href="#">4085</a>
:	
Humanswissprot	<a href="#">Q13257</a>
_no :	
Immunogen :	The antiserum was produced against synthesized peptide derived from human MAD2L1. AA range:91-140
Specificity :	MAD2 Polyclonal Antibody detects endogenous levels of MAD2 protein.
Formulation :	Liquid in PBS containing 50% glycerol, 0.5% BSA and 0.02% sodium azide.
Source :	Rabbit
Dilution :	Western Blot: 1/500 - 1/2000. ELISA: 1/5000. Not yet tested in other applications.
Purification :	The antibody was affinity-purified from rabbit antiserum by affinity-chromatography using epitope-specific immunogen.
Concentration :	1 mg/ml
Storage_stability	-20°C/1 year
:	
Msds :	MSDS_Antibody.pdf
Other_name :	MAD2L1; MAD2; Mitotic spindle assembly checkpoint protein MAD2A; HsMAD2; Mitotic arrest deficient 2-like protein 1; MAD2-like protein 1
Molecular Weight :	25KD

## Product Images



Western Blot analysis of various cells using MAD2 Polyclonal Antibody diluted at 1 : 1000



Western Blot analysis of A549 cells using MAD2 Polyclonal Antibody diluted at 1 : 1000