

## MADD Polyclonal Antibody

|                     |   |
|---------------------|---|
| Catalog_no :        | AT2620  |
| Applications :      | WB,IHC-p,IF,ELISA   |
| Reactivity :        | Human,Mouse,Rat   |
| Category :          | 抗原抗体  |
| Size :              | 100µg/50µg/20µg   |
| Gene_name :         | MADD  |
| Protein_name :      | MAP kinase-activating death domain protein  |
| Humangene_id :      | <a href="#">8567</a>  |
| Humanswissprot_no : | <a href="#">Q8WXG6</a>  |
| Mousegene_id :      | <a href="#">228355</a>  |
| Mouseswissprot_no : | <a href="#">Q80U28</a>  |
| Ratgene_id :        | <a href="#">94193</a>   |
| Ratswissprot_no :   | <a href="#">O08873</a>  |
| Immunogen :         | The antiserum was produced against synthesized peptide derived from human MADD. AA range:751-800  |
| Specificity :       | MADD Polyclonal Antibody detects endogenous levels of MADD protein.   |
| Formulation :       | Liquid in PBS containing 50% glycerol, 0.5% BSA and 0.02% sodium azide.   |
| Source :            | Rabbit  |
| Dilution :          | Western Blot: 1/500 - 1/2000. Immunohistochemistry: 1/100 - 1/300. Immunofluorescence: 1/200 - 1/1000. ELISA: 1/5000. Not yet tested in other applications. |
| Purification :      | The antibody was affinity-purified from rabbit antiserum by affinity-chromatography using epitope-specific immunogen.                                       |
| Concentration :     | 1 mg/ml   |
| Storage_stability : | -20°C/1 year  |

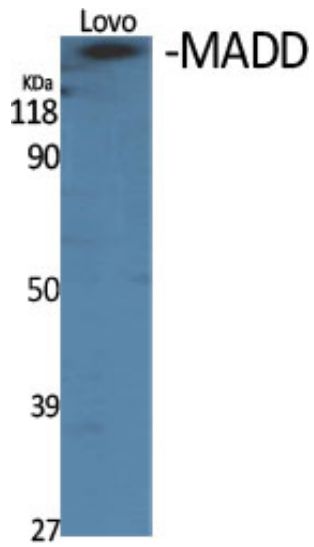


MsdS : [MSDS\\_Antibody.pdf](#)

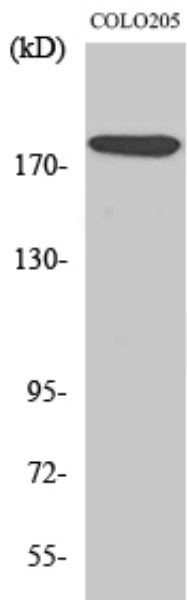
Other\_name : MADD; DENN; IG20; KIAA0358; MAP kinase-activating death domain protein; Differentially expressed in normal and neoplastic cells; Insulinoma glucagonoma clone 20; Rab3 GDP/GTP exchange factor

Molecular Weight : 183KD

## Product Images



Western Blot analysis of various cells using MADD Polyclonal Antibody diluted at 1 : 1000



Western Blot analysis of Jurkat cells using MADD Polyclonal Antibody diluted at 1 : 1000