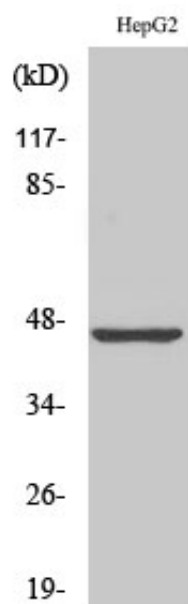




MAGE-1 Polyclonal Antibody

Catalog_no :	AT2623
Applications :	WB,IHC-p,ELISA
Reactivity :	Human
Category :	抗原抗体
Size :	100µg/50µg/20µg
Gene_name :	MAGEA1
Protein_name :	Melanoma-associated antigen 1
Humangene_id :	4100
Humanswissprot_no :	P43355
Immunogen :	The antiserum was produced against synthesized peptide derived from human MAGE-1. AA range:260-309
Specificity :	MAGE-1 Polyclonal Antibody detects endogenous levels of MAGE-1 protein.
Formulation :	Liquid in PBS containing 50% glycerol, 0.5% BSA and 0.02% sodium azide.
Source :	Rabbit
Dilution :	Western Blot: 1/500 - 1/2000. Immunohistochemistry: 1/100 - 1/300. ELISA: 1/10000. Not yet tested in other applications.
Purification :	The antibody was affinity-purified from rabbit antiserum by affinity-chromatography using epitope-specific immunogen.
Concentration :	1 mg/ml
Storage_stability :	-20°C/1 year
Msds :	MSDS_Antibody.pdf
Other_name :	MAGEA1; MAGE1; MAGE1A; Melanoma-associated antigen 1; Antigen MZ2-E; Cancer/testis antigen 1.1; CT1.1; MAGE-1 antigen
Molecular Weight :	34KD

Product Images



Western Blot analysis of various cells using MAGE-1 Polyclonal Antibody