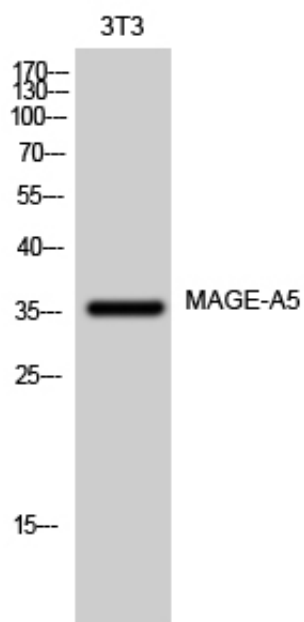


## MAGE-A5 Polyclonal Antibody

Catalog_no :	AT2625
Applications :	WB,ELISA
Reactivity :	Human
Category :	抗原抗体
Size :	100µg/50µg/20µg
Gene_name :	MAGEA5
Protein_name :	Melanoma-associated antigen 5
Humangene_id :	<a href="#">4104</a>
Humanswissprot_no :	<a href="#">P43359</a>
Immunogen :	The antiserum was produced against synthesized peptide derived from human MAGEA5. AA range:68-117
Specificity :	MAGE-A5 Polyclonal Antibody detects endogenous levels of MAGE-A5 protein.
Formulation :	Liquid in PBS containing 50% glycerol, 0.5% BSA and 0.02% sodium azide.
Source :	Rabbit
Dilution :	Western Blot: 1/500 - 1/2000. ELISA: 1/10000. Not yet tested in other applications.
Purification :	The antibody was affinity-purified from rabbit antiserum by affinity-chromatography using epitope-specific immunogen.
Concentration :	1 mg/ml
Storage_stability :	-20°C/1 year
Msds :	MSDS_Antibody.pdf
Other_name :	MAGEA5; MAGE5; Melanoma-associated antigen 5; Cancer/testis antigen 1.5; CT1.5; MAGE-5 antigen
Molecular Weight :	36KD

## Product Images



Western Blot analysis of 3T3 cells using MAGE-A5 Polyclonal Antibody