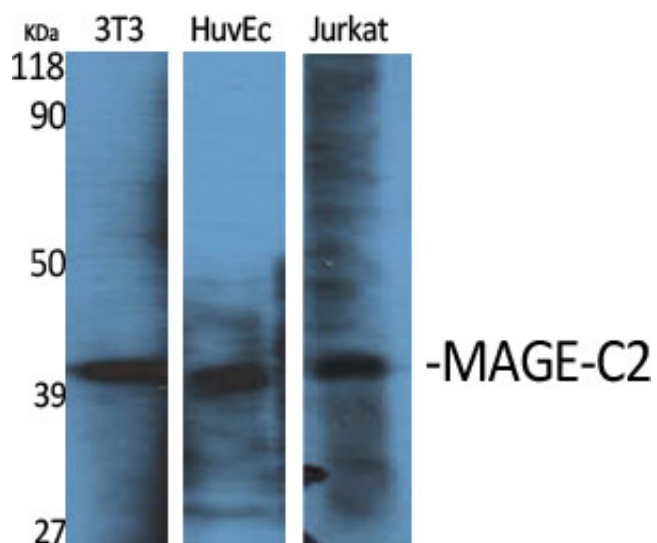




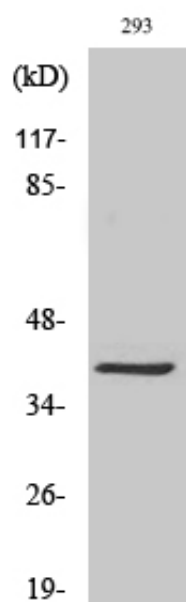
MAGE-C2 Polyclonal Antibody

Catalog_no :	AT2626
Applications :	WB,ELISA
Reactivity :	Human
Category :	抗原抗体
Size :	100µg/50µg/20µg
Gene_name :	MAGEC2
Protein_name :	Melanoma-associated antigen C2
Humangene_id :	51438
Humanswissprot_no :	Q9UBF1
Immunogen :	Synthesized peptide derived from MAGE-C2 . at AA range: 160-240
Specificity :	MAGE-C2 Polyclonal Antibody detects endogenous levels of MAGE-C2 protein.
Formulation :	Liquid in PBS containing 50% glycerol, 0.5% BSA and 0.02% sodium azide.
Source :	Rabbit
Dilution :	Western Blot: 1/500 - 1/2000. ELISA: 1/5000. Not yet tested in other applications.
Purification :	The antibody was affinity-purified from rabbit antiserum by affinity-chromatography using epitope-specific immunogen.
Concentration :	1 mg/ml
Storage_stability :	-20°C/1 year
Msds :	MSDS_Antibody.pdf
Other_name :	MAGEC2; HCA587; MAGEE1; Melanoma-associated antigen C2; Cancer/testis antigen 10; CT10; Hepatocellular carcinoma-associated antigen 587; MAGE-C2 antigen; MAGE-E1 antigen
Molecular Weight :	41KD

Product Images



Western Blot analysis of various cells using MAGE-C2 Polyclonal Antibody diluted at 1 : 1000



Western Blot analysis of 293 cells using MAGE-C2 Polyclonal Antibody diluted at 1 : 1000

Western blot analysis of mouse-brain HELA KB SH-SY5Y 293T 3T3 lysis using MAGE-C2 antibody. Antibody was diluted at 1:1000

