

MAGI-2 Polyclonal Antibody

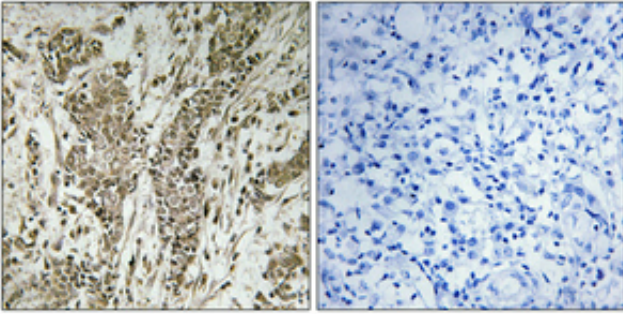
Catalog_no :	<u>AT2627</u>
Applications :	<u>WB,IHC-p,ELISA</u>
Reactivity :	<u>Human,Mouse,Rat</u>
Category :	<u>抗原抗体</u>
Size :	<u>100µg/50µg/20µg</u>
Gene_name :	<u>MAGI2</u>
Protein_name :	<u>Membrane-associated guanylate kinase WW and PDZ domain-containing protein 2</u>
Humangene_id	<u>9863</u>
:	<u></u>
Humanswissprot	<u>Q86UL8</u>
_no :	<u></u>
Mousegene_id :	<u>50791</u>
Mouseswissprot	<u>Q9WVQ1</u>
_no :	<u></u>
Ratgene_id :	<u>113970</u>
Ratswissprot_no	<u>O88382</u>
:	<u></u>
Immunogen :	<u>The antiserum was produced against synthesized peptide derived from human MAGI2. AA range:221-270</u>
Specificity :	<u>MAGI-2 Polyclonal Antibody detects endogenous levels of MAGI-2 protein.</u>
Formulation :	<u>Liquid in PBS containing 50% glycerol, 0.5% BSA and 0.02% sodium azide.</u>
Source :	<u>Rabbit</u>
Dilution :	<u>Western Blot: 1/500 - 1/2000. Immunohistochemistry: 1/100 - 1/300. ELISA: 1/20000. Not yet tested in other applications.</u>
Purification :	<u>The antibody was affinity-purified from rabbit antiserum by affinity-chromatography using epitope-specific immunogen.</u>
Concentration :	<u>1 mg/ml</u>
Storage_stability	<u>-20°C/1 year</u>
:	<u></u>
Msds :	<u>MSDS_Antibody.pdf</u>



Other_name : MAGI2; ACVRINP1; AIP1; KIAA0705; Membrane-associated guanylate kinase; WW and PDZ domain-containing protein 2; Atrophin-1-interacting protein 1; AIP-1; Atrophin-1-interacting protein A; Membrane-associated guanylate kinase inverted 2; MAGI-

Molecular Weight : 156KD

Product Images



Immunohistochemical analysis of paraffin-embedded Human breast cancer. Antibody was diluted at 1:100(4°,overnight). High-pressure and temperature Tris-EDTA,pH8.0 was used for antigen retrieval. Negative contrl (right) obtaned from antibody was pre-absorbed by immunogen peptide.