

## MALT1 Polyclonal Antibody

Catalog_no :	AT2630
Applications :	WB,IHC-p,IF,ELISA
Reactivity :	Human,Mouse
Category :	抗原抗体
Size :	100µg/50µg/20µg
Gene_name :	MALT1
Protein_name :	Mucosa-associated lymphoid tissue lymphoma translocation protein 1
Humangene_id :	<a href="#">10892</a>
Humanswissprot_no :	<a href="#">Q9UDY8</a>
Mousegene_id :	<a href="#">240354</a>
Mouseswissprot_no :	<a href="#">Q2TBA3</a>
Immunogen :	The antiserum was produced against synthesized peptide derived from human MALT1. AA range:301-350
Specificity :	MALT1 Polyclonal Antibody detects endogenous levels of MALT1 protein.
Formulation :	Liquid in PBS containing 50% glycerol, 0.5% BSA and 0.02% sodium azide.
Source :	Rabbit
Dilution :	Western Blot: 1/500 - 1/2000. Immunohistochemistry: 1/100 - 1/300. Immunofluorescence: 1/200 - 1/1000. ELISA: 1/10000. Not yet tested in other applications.
Purification :	The antibody was affinity-purified from rabbit antiserum by affinity-chromatography using epitope-specific immunogen.
Concentration :	1 mg/ml
Storage_stability :	-20°C/1 year
Msds :	<a href="#">MSDS_Antibody.pdf</a>
Other_name :	MALT1; MLT; Mucosa-associated lymphoid tissue lymphoma translocation protein 1; MALT lymphoma-associated translocation; Paracaspase

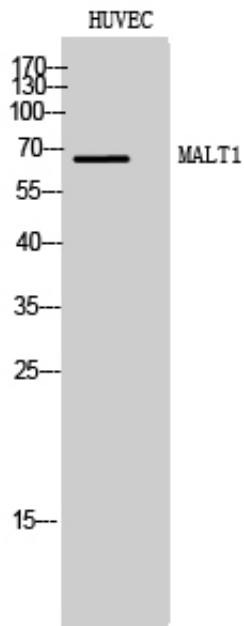


Molecular  
Weight :

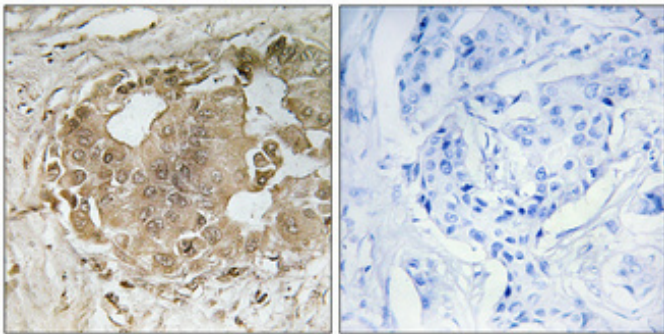
68KD

---

## Product Images



Western Blot analysis of HUVEC cells using MALT1 Polyclonal Antibody



Immunohistochemical analysis of paraffin-embedded Human breast cancer. Antibody was diluted at 1:100(4°, overnight). High-pressure and temperature Tris-EDTA, pH8.0 was used for antigen retrieval. Negative control (right) obtained from antibody was pre-absorbed by immunogen peptide.