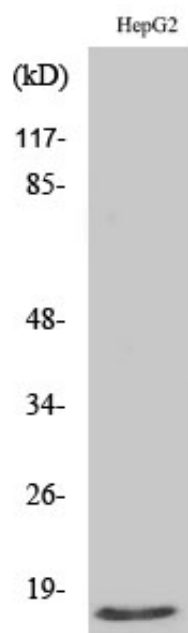




Mammaglobin B Polyclonal Antibody

Catalog_no :	AT2632
Applications :	WB,IHC-p,IF,ELISA
Reactivity :	Human
Category :	抗原抗体
Size :	100µg/50µg/20µg
Gene_name :	SCGB2A1
Protein_name :	Mammaglobin-B
Humangene_id :	4246
Humanswissprot_no :	O75556
Immunogen :	The antiserum was produced against synthesized peptide derived from human Mammaglobin B. AA range:10-59
Specificity :	Mammaglobin B Polyclonal Antibody detects endogenous levels of Mammaglobin B protein.
Formulation :	Liquid in PBS containing 50% glycerol, 0.5% BSA and 0.02% sodium azide.
Source :	Rabbit
Dilution :	Western Blot: 1/500 - 1/2000. Immunohistochemistry: 1/100 - 1/300. Immunofluorescence: 1/200 - 1/1000. ELISA: 1/20000. Not yet tested in other applications.
Purification :	The antibody was affinity-purified from rabbit antiserum by affinity-chromatography using epitope-specific immunogen.
Concentration :	1 mg/ml
Storage_stability :	-20°C/1 year
Msds :	MSDS_Antibody.pdf
Other_name :	SCGB2A1; LIPHC; MGB2; UGB3; Mammaglobin-B; Lacryglobin; Lipophilin-C; Mammaglobin-2; Secretoglobulin family 2A member 1
Molecular Weight :	15KD

Product Images



Western Blot analysis of various cells using
Mammaglobin B Polyclonal Antibody