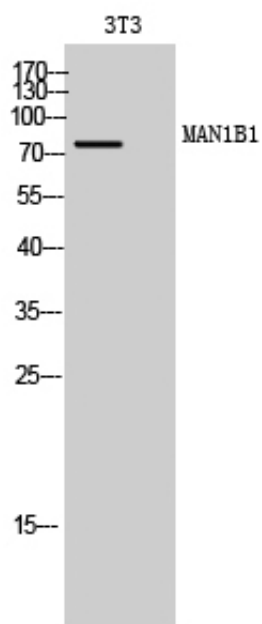




MAN1B1 Polyclonal Antibody

Catalog_no :	AT2633
Applications :	WB,ELISA
Reactivity :	Human
Category :	抗原抗体
Size :	100µg/50µg/20µg
Gene_name :	MAN1B1
Protein_name :	Endoplasmic reticulum mannosyl-oligosaccharide 1,2-alpha-mannosidase
Humangene_id :	11253
Humanswissprot_no :	Q9UKM7
Immunogen :	Synthesized peptide derived from MAN1B1 . at AA range: 100-180
Specificity :	MAN1B1 Polyclonal Antibody detects endogenous levels of MAN1B1 protein.
Formulation :	Liquid in PBS containing 50% glycerol, 0.5% BSA and 0.02% sodium azide.
Source :	Rabbit
Dilution :	Western Blot: 1/500 - 1/2000. ELISA: 1/10000. Not yet tested in other applications.
Purification :	The antibody was affinity-purified from rabbit antiserum by affinity-chromatography using epitope-specific immunogen.
Concentration :	1 mg/ml
Storage_stability :	-20°C/1 year
Msds :	MSDS_Antibody.pdf
Other_name :	MAN1B1; Endoplasmic reticulum mannosyl-oligosaccharide 1; 2-alpha-mannosidase; ER alpha-1,2-mannosidase; ER mannosidase 1; ERMan1; Man9GlcNAc2-specific-processing alpha-mannosidase; Mannosidase alpha class 1B member 1
Molecular Weight :	80KD

Product Images



Western Blot analysis of 3T3 cells using MAN1B1 Polyclonal Antibody