

MAO-A Polyclonal Antibody

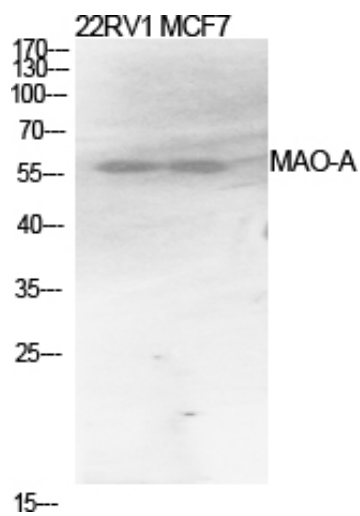
Catalog_no :	AT2635
Applications :	WB,IHC-p,ELISA
Reactivity :	Human,Mouse,Rat
Category :	抗原抗体
Size :	100µg/50µg/20µg
Gene_name :	MAOA
Protein_name :	Amine oxidase [flavin-containing] A
Humangene_id	4128
:	
Humanswissprot	P21397
_no :	
Mousegene_id :	17161
Mouseswissprot	Q64133
_no :	
Ratswissprot_no	P21396
:	
Immunogen :	The antiserum was produced against synthesized peptide derived from human MAO-A. AA range:298-347
Specificity :	MAO-A Polyclonal Antibody detects endogenous levels of MAO-A protein.
Formulation :	Liquid in PBS containing 50% glycerol, 0.5% BSA and 0.02% sodium azide.
Source :	Rabbit
Dilution :	Western Blot: 1/500 - 1/2000. Immunohistochemistry: 1/100 - 1/300. ELISA: 1/20000. Not yet tested in other applications.
Purification :	The antibody was affinity-purified from rabbit antiserum by affinity-chromatography using epitope-specific immunogen.
Concentration :	1 mg/ml
Storage_stability	-20°C/1 year
:	
Msds :	MSDS_Antibody.pdf
Other_name :	MAOA; Amine oxidase [flavin-containing] A; Monoamine oxidase type A; MAO-A



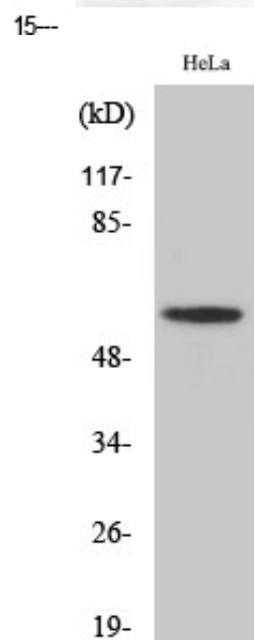
Molecular
Weight :

61KD

Product Images



Western Blot analysis of various cells using MAO-A Polyclonal Antibody diluted at 1 : 1000



Western Blot analysis of HeLa cells using MAO-A Polyclonal Antibody diluted at 1 : 1000