

MARCH3 Polyclonal Antibody

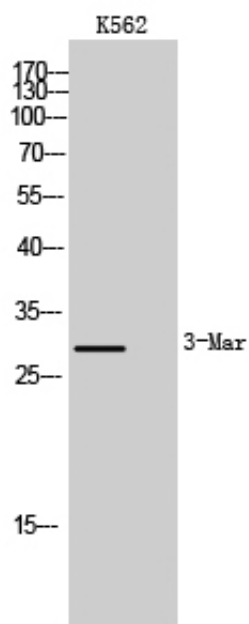
Catalog_no :	AT2644
Applications :	WB,IHC-p,ELISA
Reactivity :	Human,Mouse,Rat,Monkey
Category :	抗原抗体
Size :	100µg/50µg/20µg
Gene_name :	MARCH3
Protein_name :	E3 ubiquitin-protein ligase MARCH3
Humangene_id :	115123
Humanswissprot_no :	Q86UD3
Mousegene_id :	320253
Mouseswissprot_no :	Q8BRX9
Ratgene_id :	364878
Ratswissprot_no :	Q5XIE5
Immunogen :	The antiserum was produced against synthesized peptide derived from human MARCH3. AA range:111-160
Specificity :	MARCH3 Polyclonal Antibody detects endogenous levels of 40605 protein.
Formulation :	Liquid in PBS containing 50% glycerol, 0.5% BSA and 0.02% sodium azide.
Source :	Rabbit
Dilution :	Western Blot: 1/500 - 1/2000. Immunohistochemistry: 1/100 - 1/300. ELISA: 1/40000. Not yet tested in other applications.
Purification :	The antibody was affinity-purified from rabbit antiserum by affinity-chromatography using epitope-specific immunogen.
Concentration :	1 mg/ml
Storage_stability :	-20°C/1 year
Msds :	MSDS_Antibody.pdf



Other_name : MARCH3; RNF173; E3 ubiquitin-protein ligase MARCH3; Membrane-associated RING finger protein 3; Membrane-associated RING-CH protein III; MARCH-III; RING finger protein 173

Molecular Weight : 29KD

Product Images



Western Blot analysis of K562 cells using MARCH3 Polyclonal Antibody