



MARK1/2/3/4 Polyclonal Antibody

Catalog_no :	<u>AT2650</u>
Applications :	<u>WB,IHC-p,IF,ELISA</u>
Reactivity :	<u>Human,Mouse,Rat,Monkey</u>
Category :	<u>抗原抗体</u>
Size :	<u>100µg/50µg/20µg</u>
Gene_name :	<u>MARK1/2/3/4</u>
Protein_name :	<u>Serine/threonine-protein kinase MARK1/2/3/4</u>
Humangene_id :	<u>4139/2011/4140/57787</u>
Humanswissprot_no :	<u>Q9P0L2/Q7KZI7/P27448/Q96L34</u>
Mousegene_id :	<u>226778/13728/17169/232944</u>
Ratgene_id :	<u>117016/60328/170577</u>
Ratswissprot_no :	<u>O08678/O08679/Q8VHF0</u>
Immunogen :	<u>The antiserum was produced against synthesized peptide derived from human MARK1/2/3/4. AA range:181-230</u>
Specificity :	<u>MARK1/2/3/4 Polyclonal Antibody detects endogenous levels of MARK1/2/3/4 protein.</u>
Formulation :	<u>Liquid in PBS containing 50% glycerol, 0.5% BSA and 0.02% sodium azide.</u>
Source :	<u>Rabbit</u>
Dilution :	<u>Western Blot: 1/500 - 1/2000. Immunohistochemistry: 1/100 - 1/300. Immunofluorescence: 1/200 - 1/1000. ELISA: 1/10000. Not yet tested in other applications.</u>
Purification :	<u>The antibody was affinity-purified from rabbit antiserum by affinity-chromatography using epitope-specific immunogen.</u>
Concentration :	<u>1 mg/ml</u>
Storage_stability :	<u>-20°C/1 year</u>
Msds :	<u>MSDS_Antibody.pdf</u>
Other_name :	<u>MARK1; KIAA1477; MARK; Serine/threonine-protein kinase MARK1; MAP/microtubule</u>

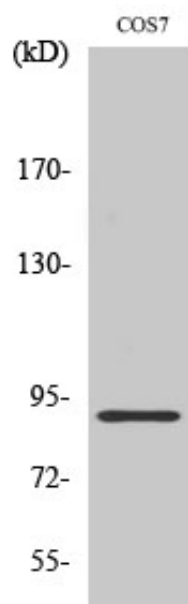


affinity-regulating kinase 1; PAR1 homolog c; Par-1c; Par1c; MARK2; EMK1;
Serine/threonine-protein kinase MARK2; ELKL motif kinase 1; EMK-1; MAP/microtubule
affin

Molecular
Weight :

89KD

Product Images



Western Blot analysis of various cells using MARK1/2/3/4 Polyclonal Antibody