



MARK2 Polyclonal Antibody

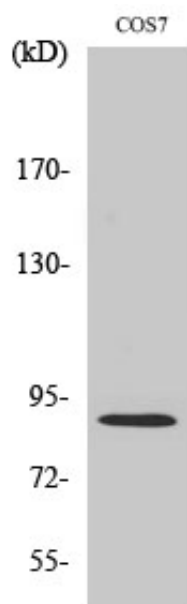
Catalog_no :	<u>AT2651</u>
Applications :	<u>WB,IF,ELISA</u>
Reactivity :	<u>Human,Mouse,Rat,Monkey</u>
Category :	<u>抗原抗体</u>
Size :	<u>100µg/50µg/20µg</u>
Gene_name :	<u>MARK2</u>
Protein_name :	<u>Serine/threonine-protein kinase MARK2</u>
Humangene_id :	<u>2011</u>
Humanswissprot_no :	<u>Q7KZ17</u>
Mousegene_id :	<u>13728</u>
Mouseswissprot_no :	<u>Q05512</u>
Ratgene_id :	<u>60328</u>
Ratswissprot_no :	<u>O08679</u>
Immunogen :	<u>The antiserum was produced against synthesized peptide derived from human MARK2. AA range:10-59</u>
Specificity :	<u>MARK2 Polyclonal Antibody detects endogenous levels of MARK2 protein.</u>
Formulation :	<u>Liquid in PBS containing 50% glycerol, 0.5% BSA and 0.02% sodium azide.</u>
Source :	<u>Rabbit</u>
Dilution :	<u>Western Blot: 1/500 - 1/2000. Immunofluorescence: 1/200 - 1/1000. ELISA: 1/20000. Not yet tested in other applications.</u>
Purification :	<u>The antibody was affinity-purified from rabbit antiserum by affinity-chromatography using epitope-specific immunogen.</u>
Concentration :	<u>1 mg/ml</u>
Storage_stability :	<u>-20°C/1 year</u>
Msds :	<u>MSDS_Antibody.pdf</u>



Other_name : MARK2; EMK1; Serine/threonine-protein kinase MARK2; ELKL motif kinase 1; EMK-1; MAP/microtubule affinity-regulating kinase 2; PAR1 homolog; PAR1 homolog b; Par-1b; Par1b

Molecular Weight : 85KD

Product Images



Western Blot analysis of various cells using MARK2 Polyclonal Antibody