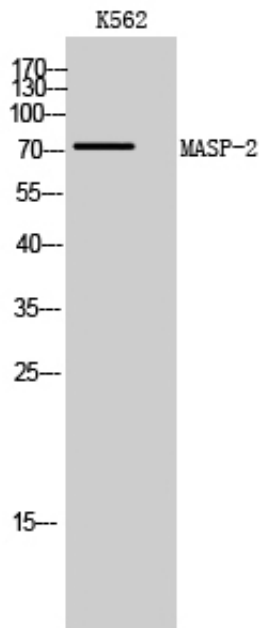


MASP-2 Polyclonal Antibody

Catalog_no :	AT2656
Applications :	WB,ELISA
Reactivity :	Human
Category :	抗原抗体
Size :	100µg/50µg/20µg
Gene_name :	MASP2
Protein_name :	Mannan-binding lectin serine protease 2
Humangene_id :	10747
Humanswissprot_no :	O00187
Immunogen :	The antiserum was produced against synthesized peptide derived from human MASP2. AA range:227-276
Specificity :	MASP-2 Polyclonal Antibody detects endogenous levels of MASP-2 protein.
Formulation :	Liquid in PBS containing 50% glycerol, 0.5% BSA and 0.02% sodium azide.
Source :	Rabbit
Dilution :	Western Blot: 1/500 - 1/2000. ELISA: 1/20000. Not yet tested in other applications.
Purification :	The antibody was affinity-purified from rabbit antiserum by affinity-chromatography using epitope-specific immunogen.
Concentration :	1 mg/ml
Storage_stability :	-20°C/1 year
Msds :	MSDS_Antibody.pdf
Other_name :	MASP2; Mannan-binding lectin serine protease 2; MBL-associated serine protease 2; Mannose-binding protein-associated serine protease 2; MASP-2
Molecular Weight :	75KD

Product Images



Western Blot analysis of K562 cells using MASP-2 Polyclonal Antibody