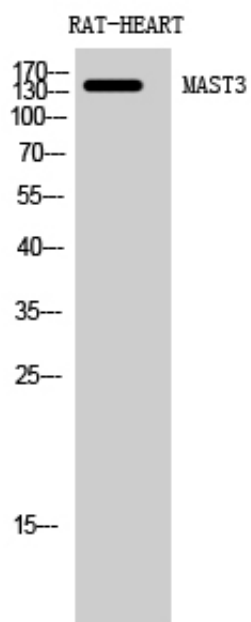




MAST3 Polyclonal Antibody

Catalog_no :	AT2659
Applications :	WB,ELISA
Reactivity :	Human,Mouse
Category :	抗原抗体
Size :	100µg/50µg/20µg
Gene_name :	MAST3
Protein_name :	Microtubule-associated serine/threonine-protein kinase 3
Humangene_id :	23031
Humanswissprot_no :	O60307
Mousegene_id :	546071
Mouseswissprot_no :	Q3U214
Immunogen :	The antiserum was produced against synthesized peptide derived from human MAST3. AA range:1031-1080
Specificity :	MAST3 Polyclonal Antibody detects endogenous levels of MAST3 protein.
Formulation :	Liquid in PBS containing 50% glycerol, 0.5% BSA and 0.02% sodium azide.
Source :	Rabbit
Dilution :	Western Blot: 1/500 - 1/2000. ELISA: 1/10000. Not yet tested in other applications.
Purification :	The antibody was affinity-purified from rabbit antiserum by affinity-chromatography using epitope-specific immunogen.
Concentration :	1 mg/ml
Storage_stability :	-20°C/1 year
Msds :	MSDS_Antibody.pdf
Other_name :	MAST3; KIAA0561; Microtubule-associated serine/threonine-protein kinase 3
Molecular Weight :	143KD

Product Images



Western Blot analysis of RAT-HEART cells using MAST3 Polyclonal Antibody diluted at 1 : 500