

Mat1 Polyclonal Antibody

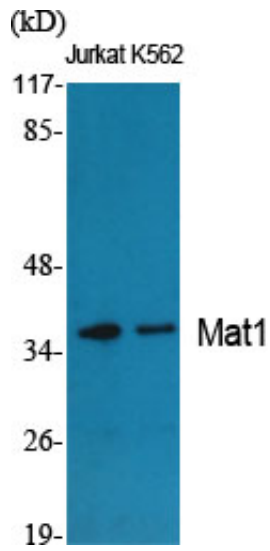
Catalog_no :	AT2662
Applications :	WB,IHC-p,ELISA
Reactivity :	Human,Mouse,Rat
Category :	抗原抗体
Size :	100µg/50µg/20µg
Gene_name :	MNAT1
Protein_name :	CDK-activating kinase assembly factor MAT1
Humangene_id :	4331
Humanswissprot_no :	P51948
Mousegene_id :	17420
Mouseswissprot_no :	P51949
Immunogen :	The antiserum was produced against synthesized peptide derived from human MAT1. AA range:91-140
Specificity :	Mat1 Polyclonal Antibody detects endogenous levels of Mat1 protein.
Formulation :	Liquid in PBS containing 50% glycerol, 0.5% BSA and 0.02% sodium azide.
Source :	Rabbit
Dilution :	Western Blot: 1/500 - 1/2000. Immunohistochemistry: 1/100 - 1/300. ELISA: 1/20000. Not yet tested in other applications.
Purification :	The antibody was affinity-purified from rabbit antiserum by affinity-chromatography using epitope-specific immunogen.
Concentration :	1 mg/ml
Storage_stability :	-20°C/1 year
Msds :	MSDS_Antibody.pdf
Other_name :	MNAT1; CAP35; MAT1; RNF66; CDK-activating kinase assembly factor MAT1; CDK7/cyclin-H assembly factor; Cyclin-G1-interacting protein; Menage a trois; RING finger protein 66; RING finger protein MAT1; p35; p36



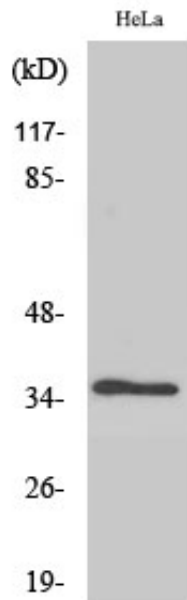
Molecular
Weight :

36KD

Product Images



Western Blot analysis of various cells using Mat1 Polyclonal Antibody



Western Blot analysis of 293 cells using Mat1 Polyclonal Antibody