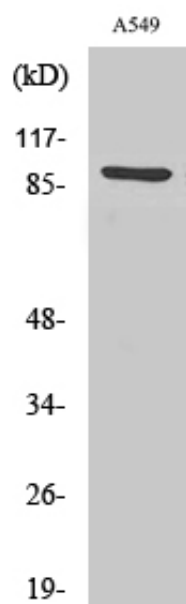


Matriptase Polyclonal Antibody

Catalog_no :	AT2664
Applications :	WB,IF,ELISA
Reactivity :	Human
Category :	抗原抗体
Size :	100µg/50µg/20µg
Gene_name :	ST14
Protein_name :	Suppressor of tumorigenicity 14 protein
Humangene_id :	6768
Humanswissprot_no :	Q9Y5Y6
Immunogen :	The antiserum was produced against synthesized peptide derived from human ST14. AA range:10-59
Specificity :	Matriptase Polyclonal Antibody detects endogenous levels of Matriptase protein.
Formulation :	Liquid in PBS containing 50% glycerol, 0.5% BSA and 0.02% sodium azide.
Source :	Rabbit
Dilution :	Western Blot: 1/500 - 1/2000. Immunofluorescence: 1/200 - 1/1000. ELISA: 1/10000. Not yet tested in other applications.
Purification :	The antibody was affinity-purified from rabbit antiserum by affinity-chromatography using epitope-specific immunogen.
Concentration :	1 mg/ml
Storage_stability :	-20°C/1 year
Msds :	MSDS_Antibody.pdf
Other_name :	ST14; PRSS14; SNC19; TADG15; Suppressor of tumorigenicity 14 protein; Matriptase; Membrane-type serine protease 1; MT-SP1; Prostamin; Serine protease 14; Serine protease TADG-15; Tumor-associated differentially-expressed gene 15 protein
Molecular Weight :	95KD

Product Images



Western Blot analysis of various cells using Matriptase Polyclonal Antibody