



MaxiKα Polyclonal Antibody

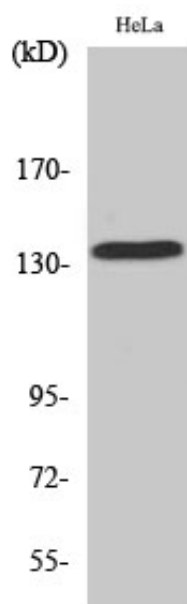
Catalog_no :	<u>AT2666</u>
Applications :	<u>WB,IHC-p,ELISA</u>
Reactivity :	<u>Human,Mouse,Rat</u>
Category :	<u>抗原抗体</u>
Size :	<u>100μg/50μg/20μg</u>
Gene_name :	<u>KCNMA1</u>
Protein_name :	<u>Calcium-activated potassium channel subunit alpha-1</u>
Humangene_id :	<u>3778</u>
Humanswissprot_no :	<u>Q12791</u>
Mousegene_id :	<u>16531</u>
Mouseswissprot_no :	<u>Q08460</u>
Ratgene_id :	<u>83731</u>
Ratswissprot_no :	<u>Q62976</u>
Immunogen :	<u>The antiserum was produced against synthesized peptide derived from human MaxiKalpha. AA range:721-770</u>
Specificity :	<u>MaxiKα Polyclonal Antibody detects endogenous levels of MaxiKα protein.</u>
Formulation :	<u>Liquid in PBS containing 50% glycerol, 0.5% BSA and 0.02% sodium azide.</u>
Source :	<u>Rabbit</u>
Dilution :	<u>Western Blot: 1/500 - 1/2000. Immunohistochemistry: 1/100 - 1/300. ELISA: 1/40000. Not yet tested in other applications.</u>
Purification :	<u>The antibody was affinity-purified from rabbit antiserum by affinity-chromatography using epitope-specific immunogen.</u>
Concentration :	<u>1 mg/ml</u>
Storage_stability :	<u>-20°C/1 year</u>
Msds :	<u>MSDS_Antibody.pdf</u>



Other_name : KCNMA1; KCNMA; SLO; Calcium-activated potassium channel subunit alpha-1; BK channel; BKCA alpha; Calcium-activated potassium channel; subfamily M subunit alpha-1; K(VCA)alpha; KCa1.1; Maxi K channel; MaxiK; Slo-alpha; Slo1; Slowpoke homolog

Molecular Weight : 137KD

Product Images



Western Blot analysis of various cells using MaxiKa Polyclonal Antibody