

MaxiK β Polyclonal Antibody

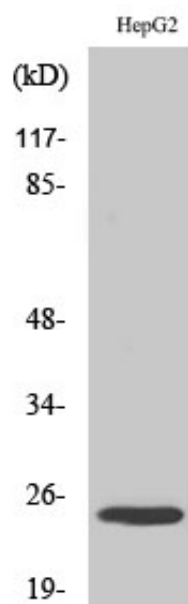
Catalog_no :	AT2667
Applications :	WB,IHC-p,ELISA
Reactivity :	Human,Mouse,Rat
Category :	抗原抗体
Size :	100 μ g/50 μ g/20 μ g
Gene_name :	KCNMB4
Protein_name :	Calcium-activated potassium channel subunit beta-4
Humangene_id :	27345
Humanswissprot_no :	Q86W47
Mousegene_id :	58802
Mouseswissprot_no :	Q9JIN6
Ratgene_id :	66016
Ratswissprot_no :	Q9ESK8
Immunogen :	The antiserum was produced against synthesized peptide derived from human MaxiKbeta. AA range:70-119
Specificity :	MaxiK β Polyclonal Antibody detects endogenous levels of MaxiK β protein.
Formulation :	Liquid in PBS containing 50% glycerol, 0.5% BSA and 0.02% sodium azide.
Source :	Rabbit
Dilution :	Western Blot: 1/500 - 1/2000. Immunohistochemistry: 1/100 - 1/300. ELISA: 1/20000. Not yet tested in other applications.
Purification :	The antibody was affinity-purified from rabbit antiserum by affinity-chromatography using epitope-specific immunogen.
Concentration :	1 mg/ml
Storage_stability :	-20°C/1 year
Msds :	MSDS_Antibody.pdf



Other_name : KCNMB4; Calcium-activated potassium channel subunit beta-4; BK channel subunit beta-4; BKbeta4; Hbeta4; Calcium-activated potassium channel; subfamily M subunit beta-4; Charybdotoxin receptor subunit beta-4; K(VCA)beta-4; Maxi K channel sub

Molecular Weight : 24KD

Product Images



Western Blot analysis of various cells using MaxiK β Polyclonal Antibody