

MaxiK β 2 Polyclonal Antibody

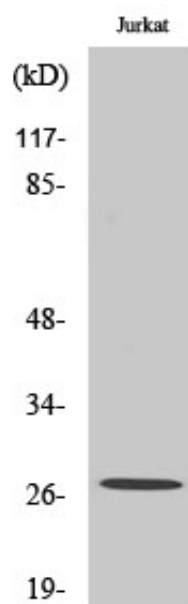
Catalog_no :	<u>AT2668</u>
Applications :	<u>WB,IHC-p,ELISA</u>
Reactivity :	<u>Human,Mouse,Rat</u>
Category :	<u>抗原抗体</u>
Size :	<u>100μg/50μg/20μg</u>
Gene_name :	<u>KCNMB2</u>
Protein_name :	<u>Calcium-activated potassium channel subunit beta-2</u>
Humangene_id :	<u>10242</u>
Humanswissprot_no :	<u>Q9Y691</u>
Mousegene_id :	<u>72413</u>
Mouseswissprot_no :	<u>Q9CZM9</u>
Ratgene_id :	<u>294961</u>
Ratswissprot_no :	<u>Q811Q0</u>
Immunogen :	<u>The antiserum was produced against synthesized peptide derived from human KCNMB2. AA range:151-200</u>
Specificity :	<u>MaxiKβ2 Polyclonal Antibody detects endogenous levels of MaxiKβ2 protein.</u>
Formulation :	<u>Liquid in PBS containing 50% glycerol, 0.5% BSA and 0.02% sodium azide.</u>
Source :	<u>Rabbit</u>
Dilution :	<u>Western Blot: 1/500 - 1/2000. Immunohistochemistry: 1/100 - 1/300. ELISA: 1/20000. Not yet tested in other applications.</u>
Purification :	<u>The antibody was affinity-purified from rabbit antiserum by affinity-chromatography using epitope-specific immunogen.</u>
Concentration :	<u>1 mg/ml</u>
Storage_stability :	<u>-20°C/1 year</u>
Msds :	<u>MSDS_Antibody.pdf</u>



Other_name : KCNMB2; Calcium-activated potassium channel subunit beta-2; BK channel subunit beta-2; BKbeta2; Hbeta2; Calcium-activated potassium channel; subfamily M subunit beta-2; Charybdotoxin receptor subunit beta-2; Hbeta3; K(VCA)beta-2; Maxi K cha

Molecular Weight : 30KD

Product Images



Western Blot analysis of various cells using MaxiK β 2 Polyclonal Antibody diluted at 1 : 500