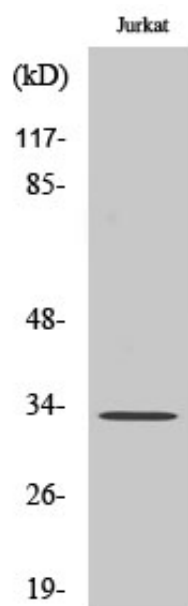




MBD3 Polyclonal Antibody

Catalog_no :	AT2671
Applications :	WB,ELISA
Reactivity :	Human,Mouse
Category :	抗原抗体
Size :	100µg/50µg/20µg
Gene_name :	MBD3
Protein_name :	Methyl-CpG-binding domain protein 3
Humangene_id :	53615
Humanswissprot_no :	O95983
Mousegene_id :	17192
Mouseswissprot_no :	Q9Z2D8
Immunogen :	The antiserum was produced against synthesized peptide derived from human MBD3. AA range:221-270
Specificity :	MBD3 Polyclonal Antibody detects endogenous levels of MBD3 protein.
Formulation :	Liquid in PBS containing 50% glycerol, 0.5% BSA and 0.02% sodium azide.
Source :	Rabbit
Dilution :	Western Blot: 1/500 - 1/2000. ELISA: 1/10000. Not yet tested in other applications.
Purification :	The antibody was affinity-purified from rabbit antiserum by affinity-chromatography using epitope-specific immunogen.
Concentration :	1 mg/ml
Storage_stability :	-20°C/1 year
Msds :	MSDS_Antibody.pdf
Other_name :	MBD3; Methyl-CpG-binding domain protein 3; Methyl-CpG-binding protein MBD3
Molecular Weight :	33KD

Product Images



Western Blot analysis of various cells using MBD3 Polyclonal Antibody