

## MC2-R Polyclonal Antibody

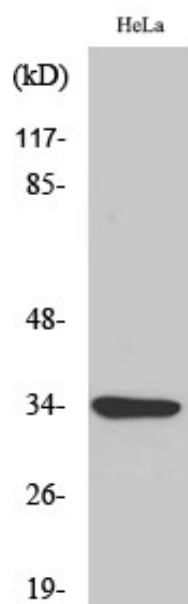
Catalog_no :	AT2674
Applications :	WB,IF,ELISA
Reactivity :	Human,Mouse
Category :	抗原抗体
Size :	100µg/50µg/20µg
Gene_name :	MC2R
Protein_name :	Adrenocorticotrophic hormone receptor
Humangene_id :	<a href="#">4158</a>
Humanswissprot_no :	<a href="#">Q001718</a>
Mousegene_id :	<a href="#">17200</a>
Mouseswissprot_no :	<a href="#">Q64326</a>
Immunogen :	The antiserum was produced against synthesized peptide derived from human ACTHR. AA range:248-297
Specificity :	MC2-R Polyclonal Antibody detects endogenous levels of MC2-R protein.
Formulation :	Liquid in PBS containing 50% glycerol, 0.5% BSA and 0.02% sodium azide.
Source :	Rabbit
Dilution :	Western Blot: 1/500 - 1/2000. Immunofluorescence: 1/200 - 1/1000. ELISA: 1/20000. Not yet tested in other applications.
Purification :	The antibody was affinity-purified from rabbit antiserum by affinity-chromatography using epitope-specific immunogen.
Concentration :	1 mg/ml
Storage_stability :	-20°C/1 year
Msds :	MSDS_Antibody.pdf
Other_name :	MC2R; ACTHR; Adrenocorticotrophic hormone receptor; ACTH receptor; ACTH-R; Adrenocorticotropin receptor; Melanocortin receptor 2; MC2-R
Molecular	34KD



Weight :

---

## Product Images



Western Blot analysis of various cells using MC2-R Polyclonal Antibody