

Mcl-1 Polyclonal Antibody

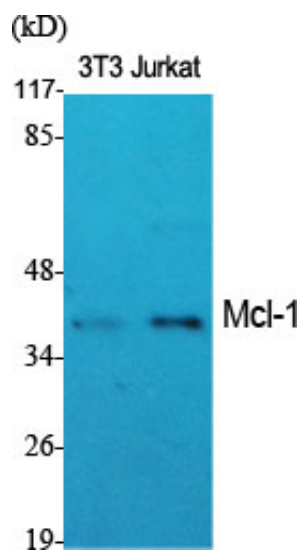
Catalog_no :	<u>AT2679</u>
Applications :	<u>WB,IHC-p,ELISA</u>
Reactivity :	<u>Human,Mouse,Rat</u>
Category :	<u>抗原抗体</u>
Size :	<u>100µg/50µg/20µg</u>
Gene_name :	<u>MCL1</u>
Protein_name :	<u>Induced myeloid leukemia cell differentiation protein Mcl-1</u>
Humangene_id	<u>4170</u>
:	<u></u>
Humanswissprot	<u>Q07820</u>
_no :	<u></u>
Mousegene_id :	<u>17210</u>
Mouseswissprot	<u>P97287</u>
_no :	<u></u>
Ratgene_id :	<u>60430</u>
Ratswissprot_no	<u>Q9Z1P3</u>
:	<u></u>
Immunogen :	<u>The antiserum was produced against synthesized peptide derived from human MCL1. AA range:91-140</u>
Specificity :	<u>Mcl-1 Polyclonal Antibody detects endogenous levels of Mcl-1 protein.</u>
Formulation :	<u>Liquid in PBS containing 50% glycerol, 0.5% BSA and 0.02% sodium azide.</u>
Source :	<u>Rabbit</u>
Dilution :	<u>Western Blot: 1/500 - 1/2000. Immunohistochemistry: 1/100 - 1/300. ELISA: 1/40000. Not yet tested in other applications.</u>
Purification :	<u>The antibody was affinity-purified from rabbit antiserum by affinity-chromatography using epitope-specific immunogen.</u>
Concentration :	<u>1 mg/ml</u>
Storage_stability	<u>-20°C/1 year</u>
:	<u></u>
Msds :	<u>MSDS_Antibody.pdf</u>



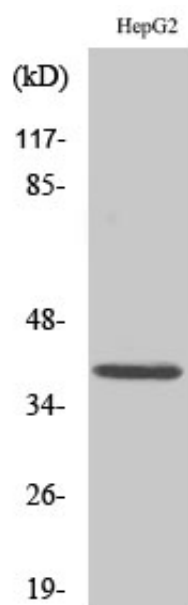
Other_name : MCL1; BCL2L3; Induced myeloid leukemia cell differentiation protein Mcl-1; Bcl-2-like protein 3; Bcl2-L-3; Bcl-2-related protein EAT/mcl1; mcl1/EAT

Molecular Weight : 37KD

Product Images



Western Blot analysis of various cells using Mcl-1
Polyclonal Antibody diluted at 1 : 1000



Western Blot analysis of Jurkat cells using Mcl-1
Polyclonal Antibody diluted at 1 : 1000